

# ECLIPSE

1/12th PRO LMP CHASSIS

## Instruction Manual



**Schumacher**  
racing-cars.com



# ADDITIONAL ITEMS REQUIRED

## Transmitter and Receiver



## E.S.C



## Servo



## Pinion



## Motor



## Li-Po Battery



CORE RC Paint  
CR600 to CR631  
CR666 to CR672



CR522 CORE RC  
Pro Tyre Glue + 2 Nozzles



## Wheels and Tyres



## Bodyshell



Soldering Iron  
CR266 40w  
CR275 80w

U3107 - Solder

AM701011 - Low Profile 4mm Connector 24K - pk2  
AM701012 - Low Profile 5mm Connector 24K - pk2



CR287  
Silicone Wire Black 14 AWG - 1Mtr



J005 Contact LMP12  
Bodyshell Rear Wheel  
Centre Finder

AM190003 Reamer With End Cap For Lexan Body

U4229 Steel Spanner - 5.5mm/3.9mm

CR044 Curved Body Scissors



AM150155 Nut Driver 5.5 (M3)



AM110115 Allen Wrench 1.5  
AM110120 Allen Wrench 2.0  
AM110125 Allen Wrench 2.5  
AM110130 Allen Wrench 3.0

# ECLIPSE

1/12th PRO LMP CHASSIS

Schumacher Racing stocks and distributes the following manufacturers products and full product listings are available on our website at [www.racing-cars.com](http://www.racing-cars.com)

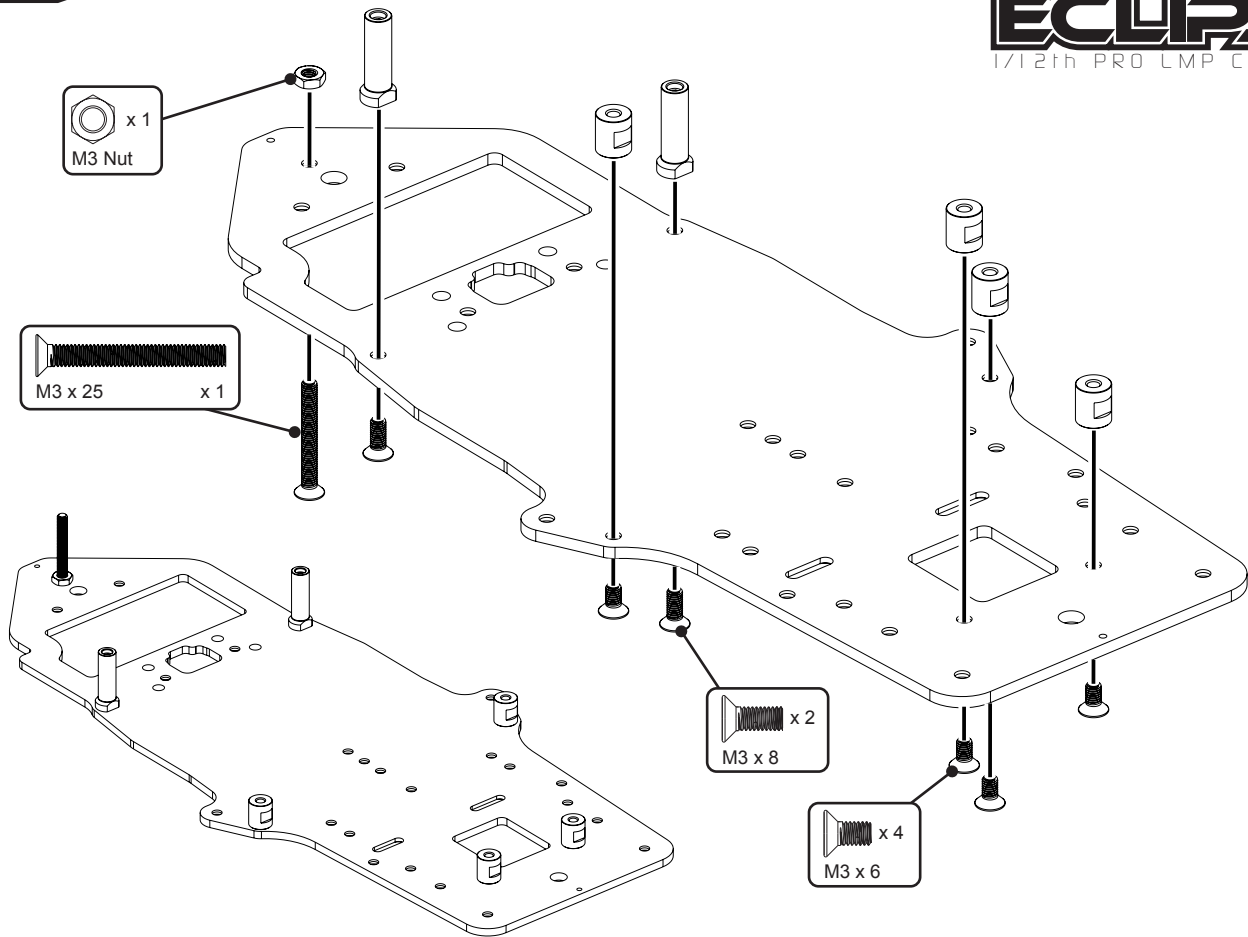
PLEASE NOTE THAT SOME OF THE PRODUCT RANGES BELOW ARE ONLY AVAILABLE IN THE UNITED KINGDOM.



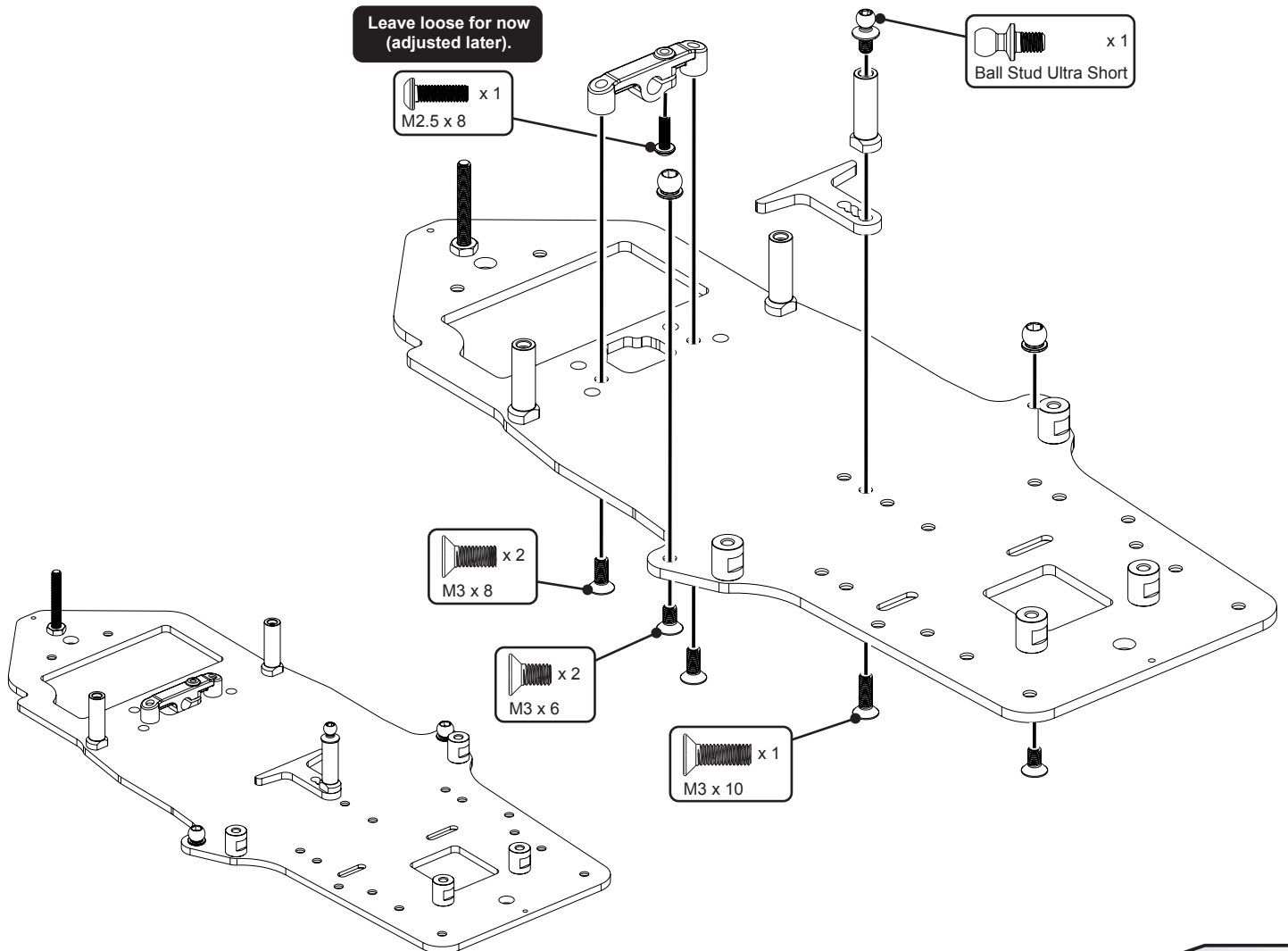
## IMPORTANT SAFETY NOTES

- We strongly recommend that anyone driving RC cars, or organising events, should obtain third party liability insurance. In the UK this can be done by joining the BRCA. [www.brca.org](http://www.brca.org)
- This product is not suitable for children under the age of 14, without the direct supervision of a responsible adult.
- Select an area for assembly that is away from the reach of small children.
- The parts in this kit are small and can be swallowed by children causing choking and possible internal injuries.
- Exercise care when using hand tools and sharp instruments during assembly.
- Carefully read all manufacturers warnings and cautions for any additional items used in the construction.
- In line with our policy of continuous development the exact details of the kit may vary.
- DO NOT use this car on public roads or in places where it can interfere with traffic, people or animals.
- Always check the operation of the radio with the wheels off the ground, before using the car.
- Make sure the radio and car batteries are fully charged before use.
- Disconnect and remove the battery from the car when not in use.
- Always store and charge LiPo batteries in a fireproof container.
- DO NOT put fingers or any objects inside rotating or moving parts as this may cause injury.
- Make sure the charger is correctly set for the type of battery you are using. Incorrect charging may cause a fire.
- Insulate all exposed electrical wiring. Exposed or damaged wires can cause short circuits and fire.
- The motor and speed controller can become hot during use. DO NOT touch them immediately after using your car as this may cause injury.

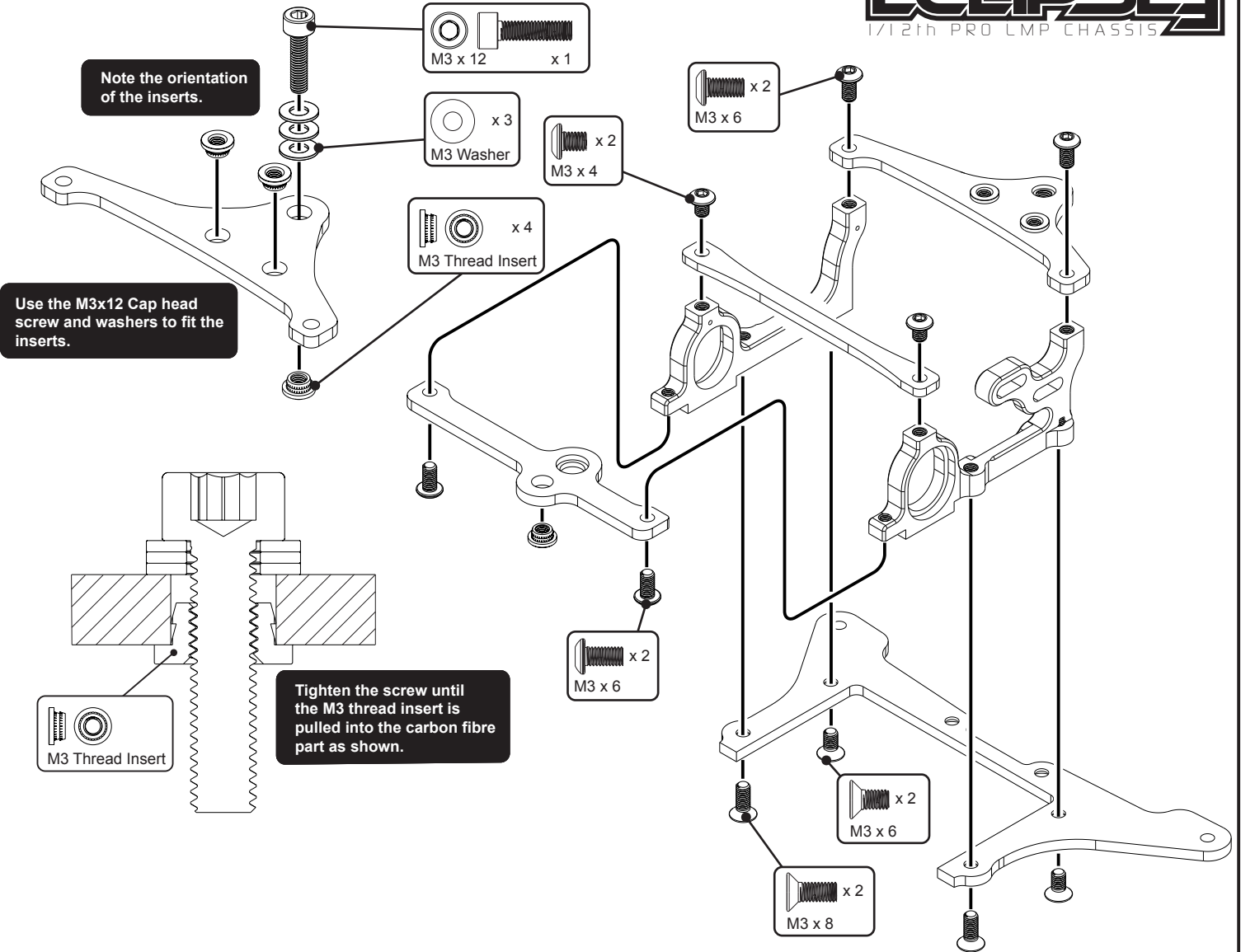
STEP 1



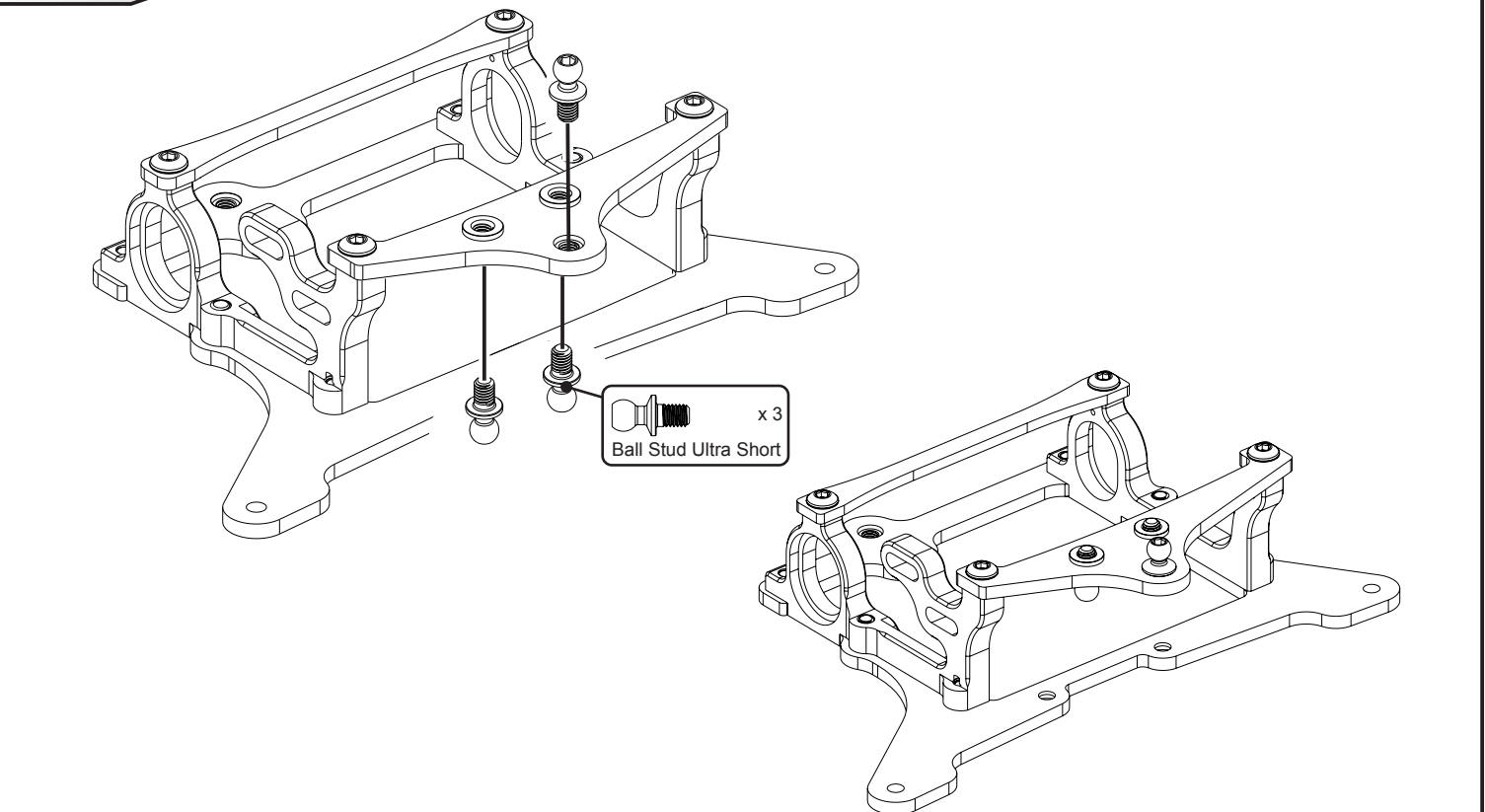
STEP 2



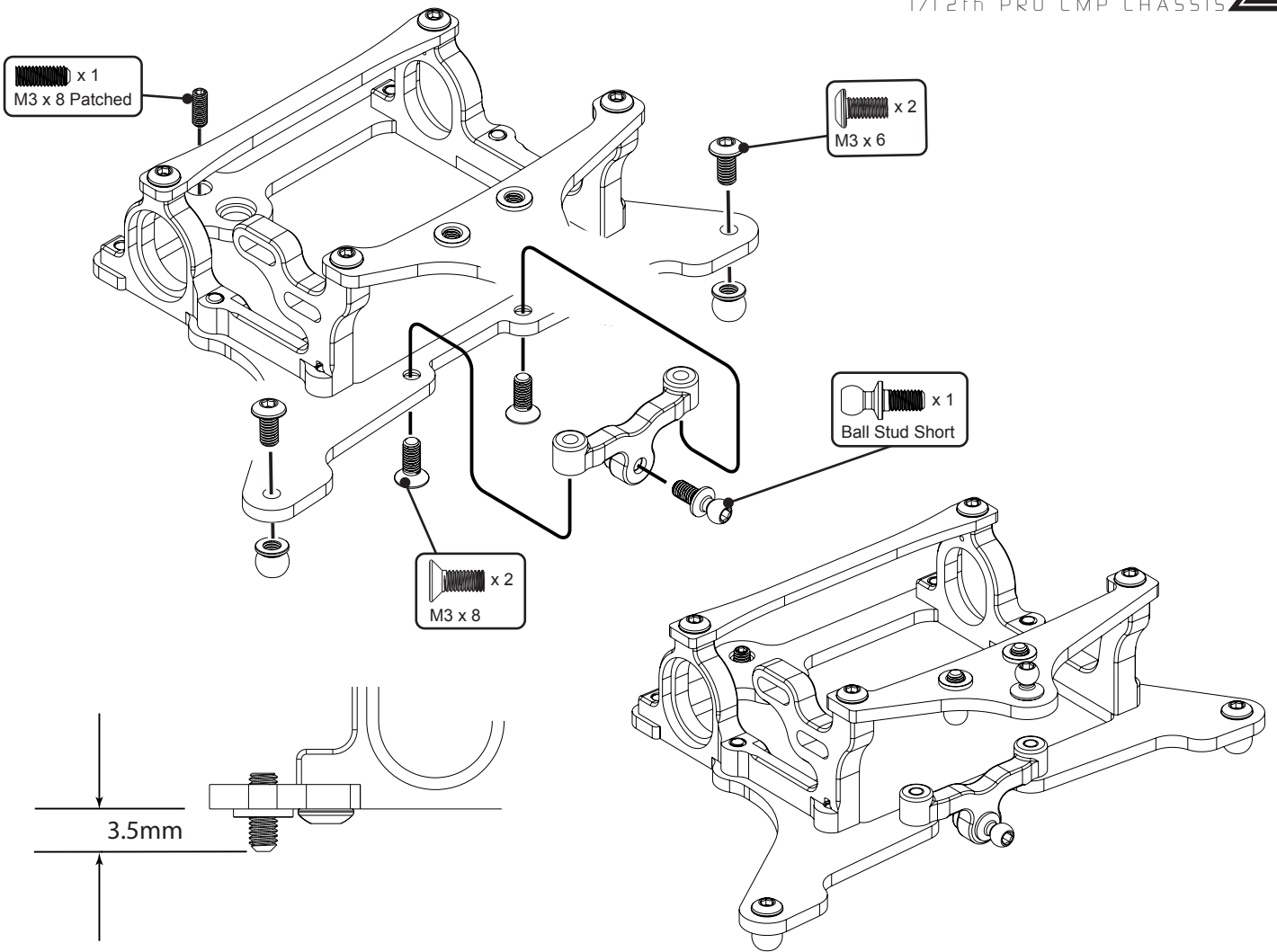
STEP 3A



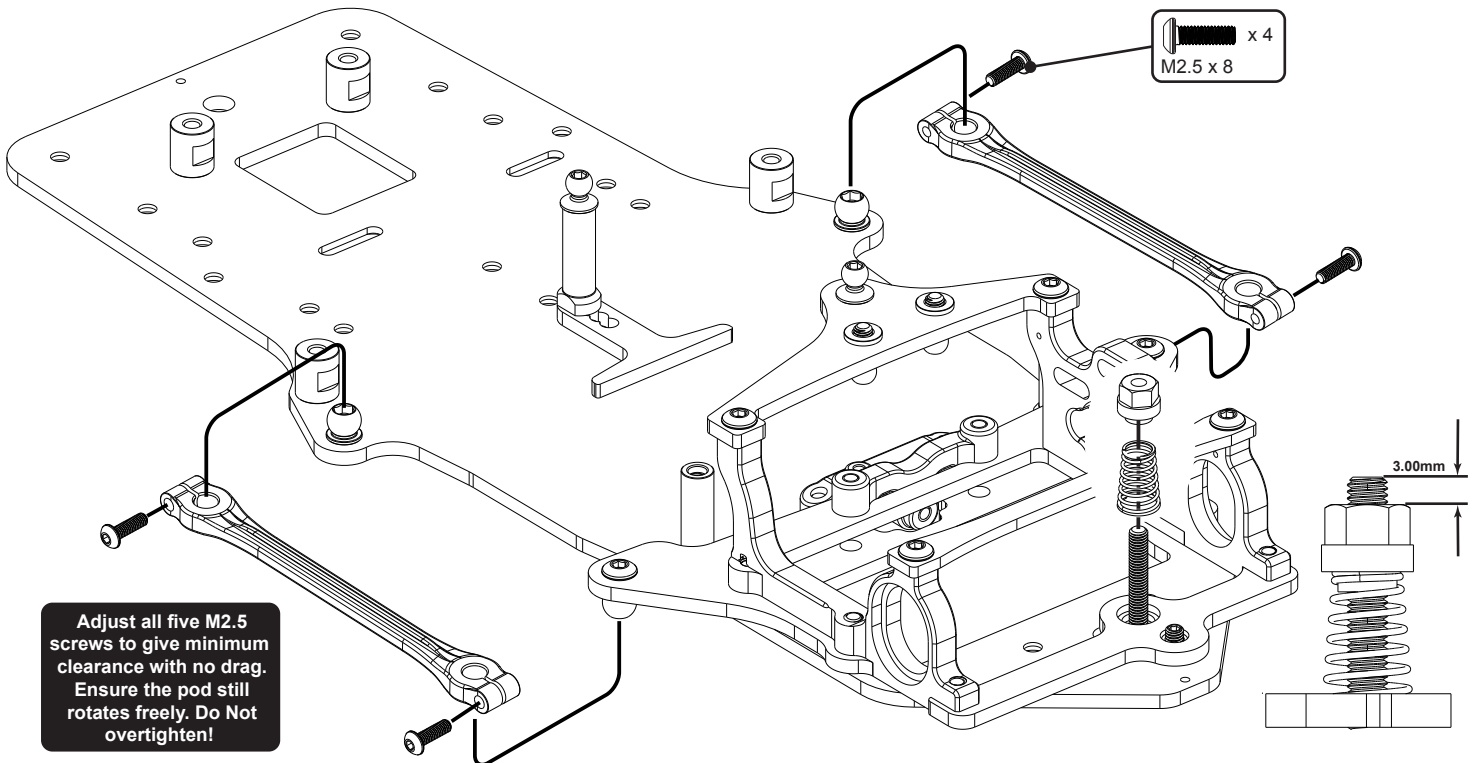
STEP 3B



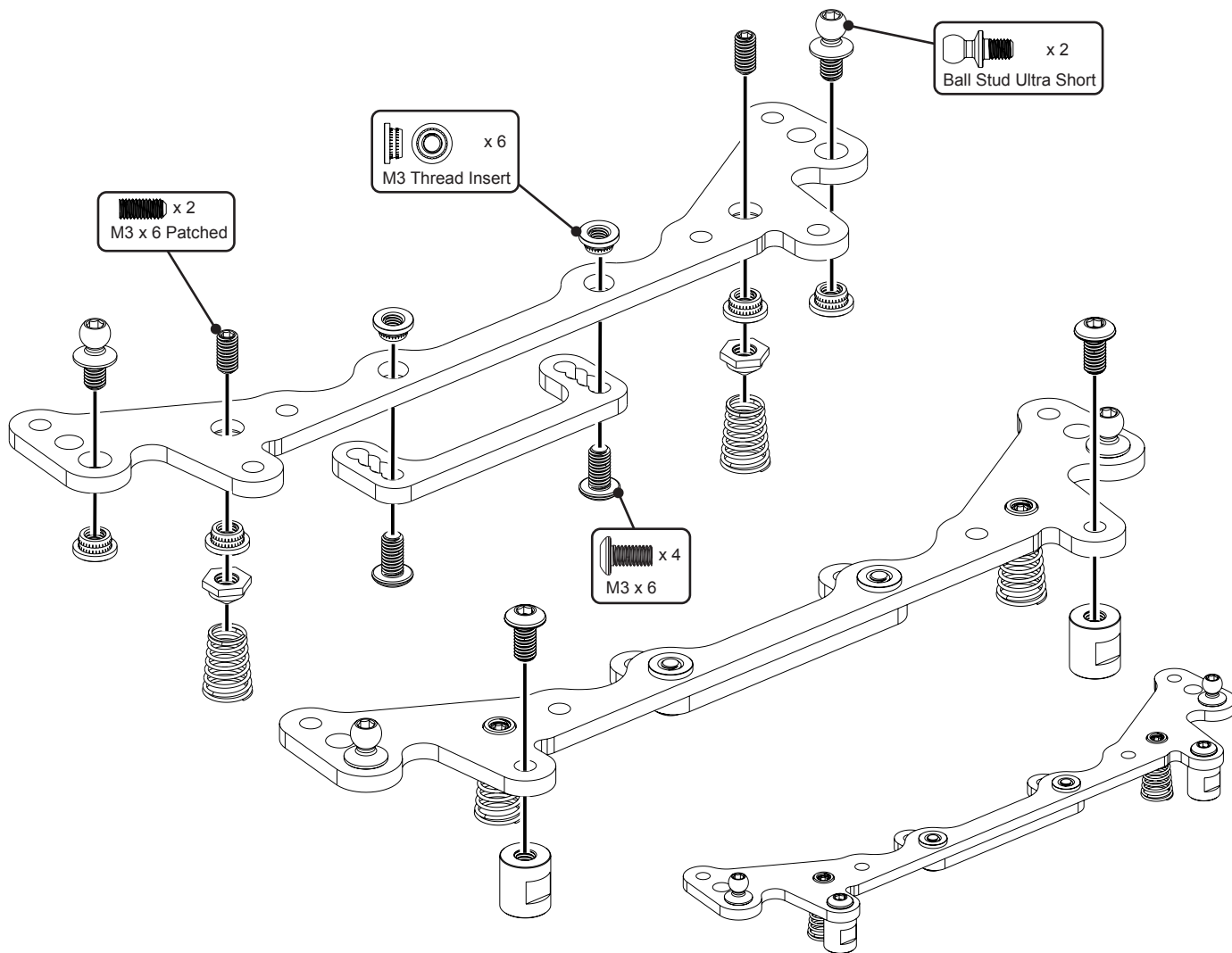
STEP 4



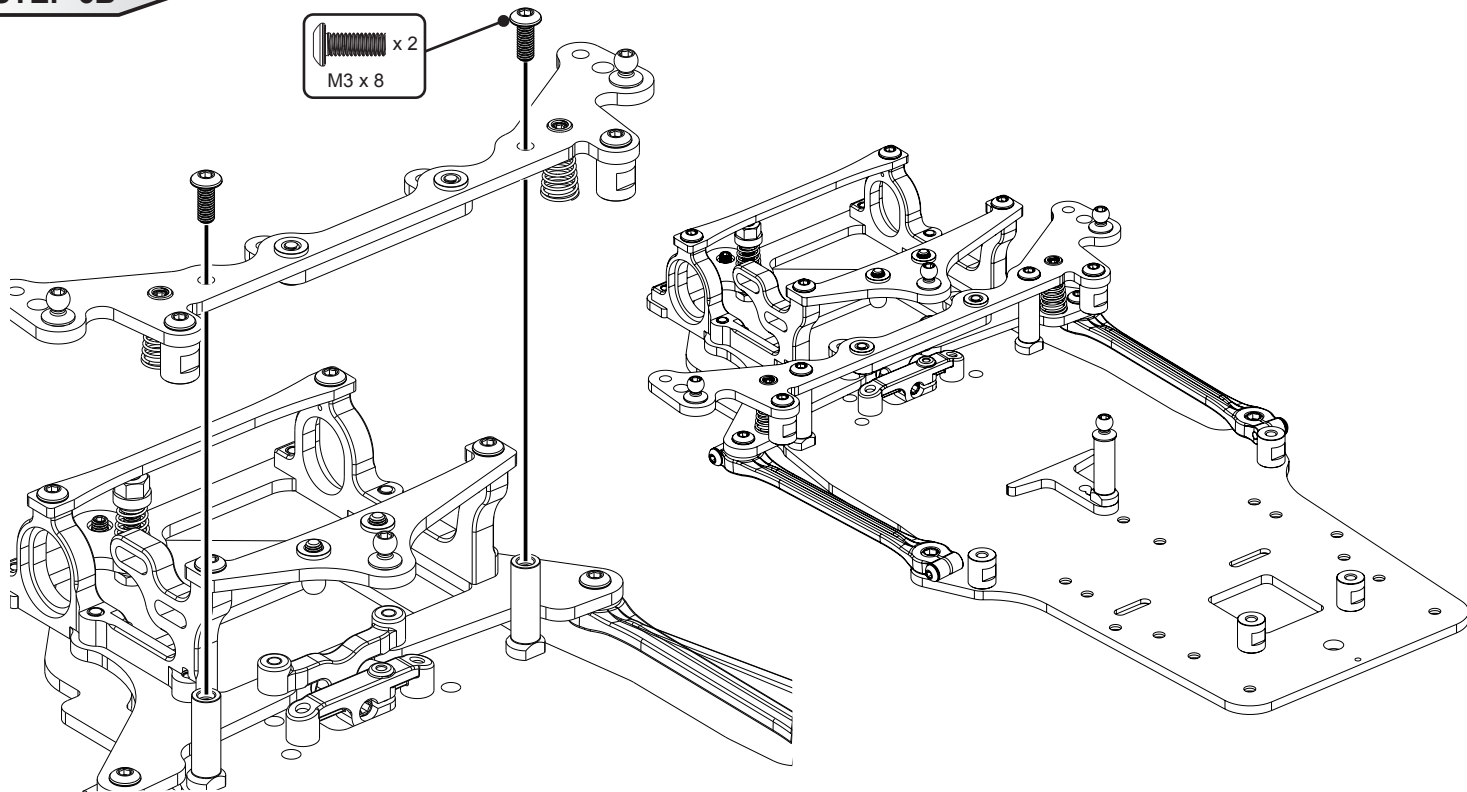
STEP 5

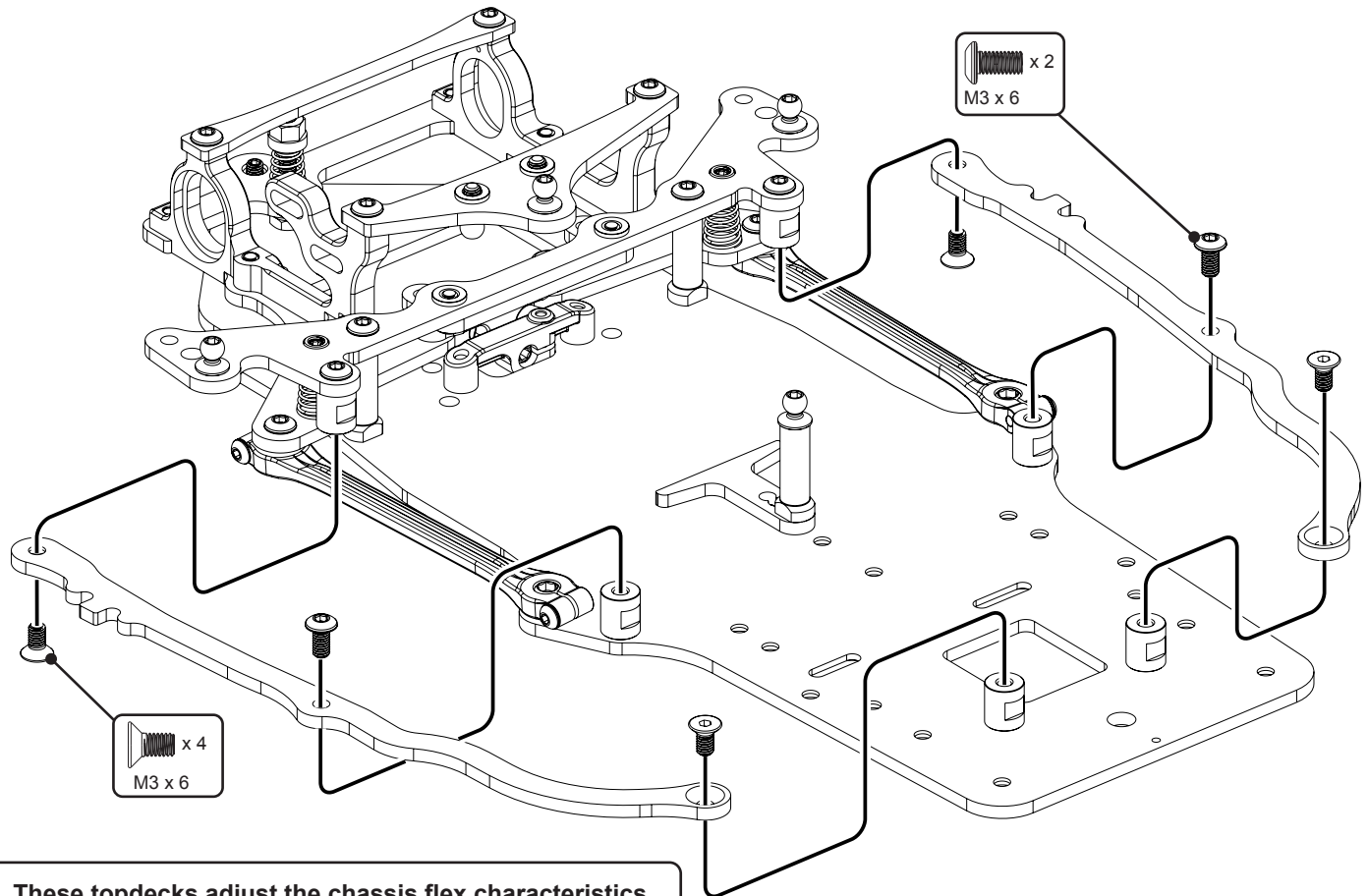


STEP 6A



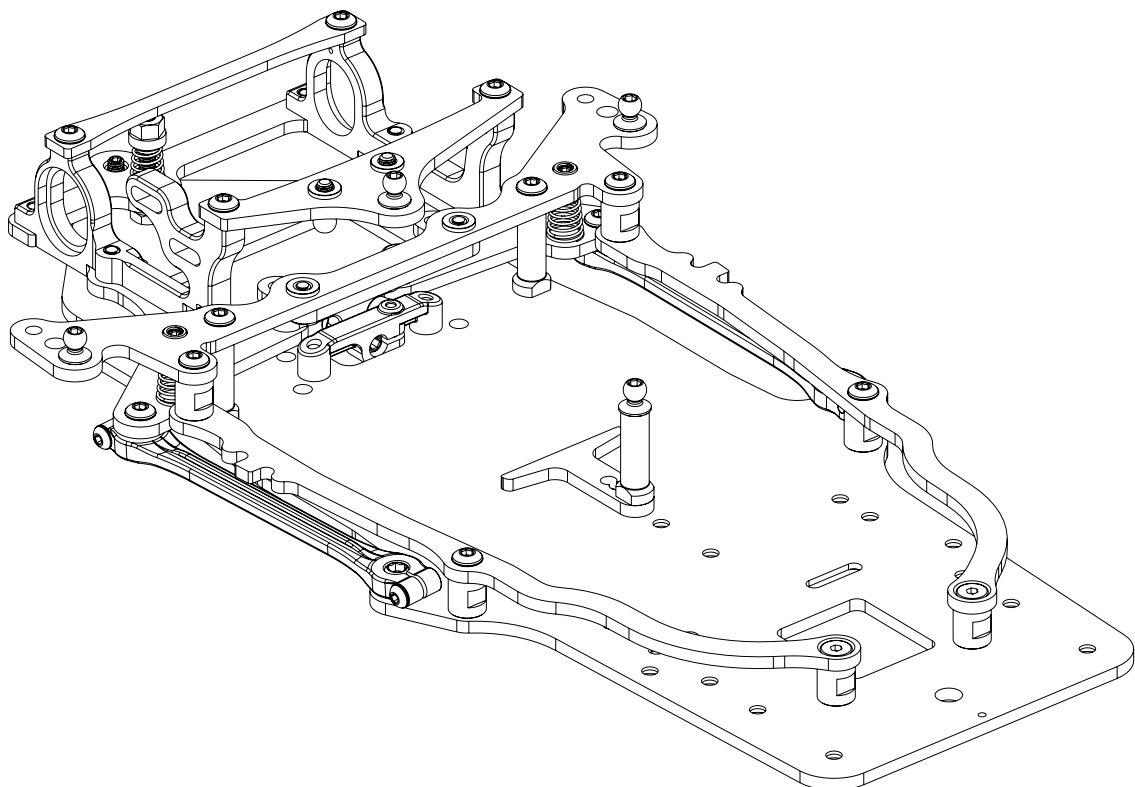
STEP 6B





These topdecks adjust the chassis flex characteristics.  
 For lower grip tracks, more flexibility is preferable.  
 For higher grip tracks, less flexibility is preferable.

<b>Option A - Topdecks removed</b>	Very Low Grip Conditions
<b>Option B - Front screws removed only.</b>	Low-Med Grip Conditions
<b>Option C - Middle screws removed only.</b>	Medium Grip Conditions
<b>Option D - All screws in place.</b>	Very High Grip Conditions



STEP 8A

Make two side dampers  
with the short sockets.

Make the centre damper  
with the long sockets.

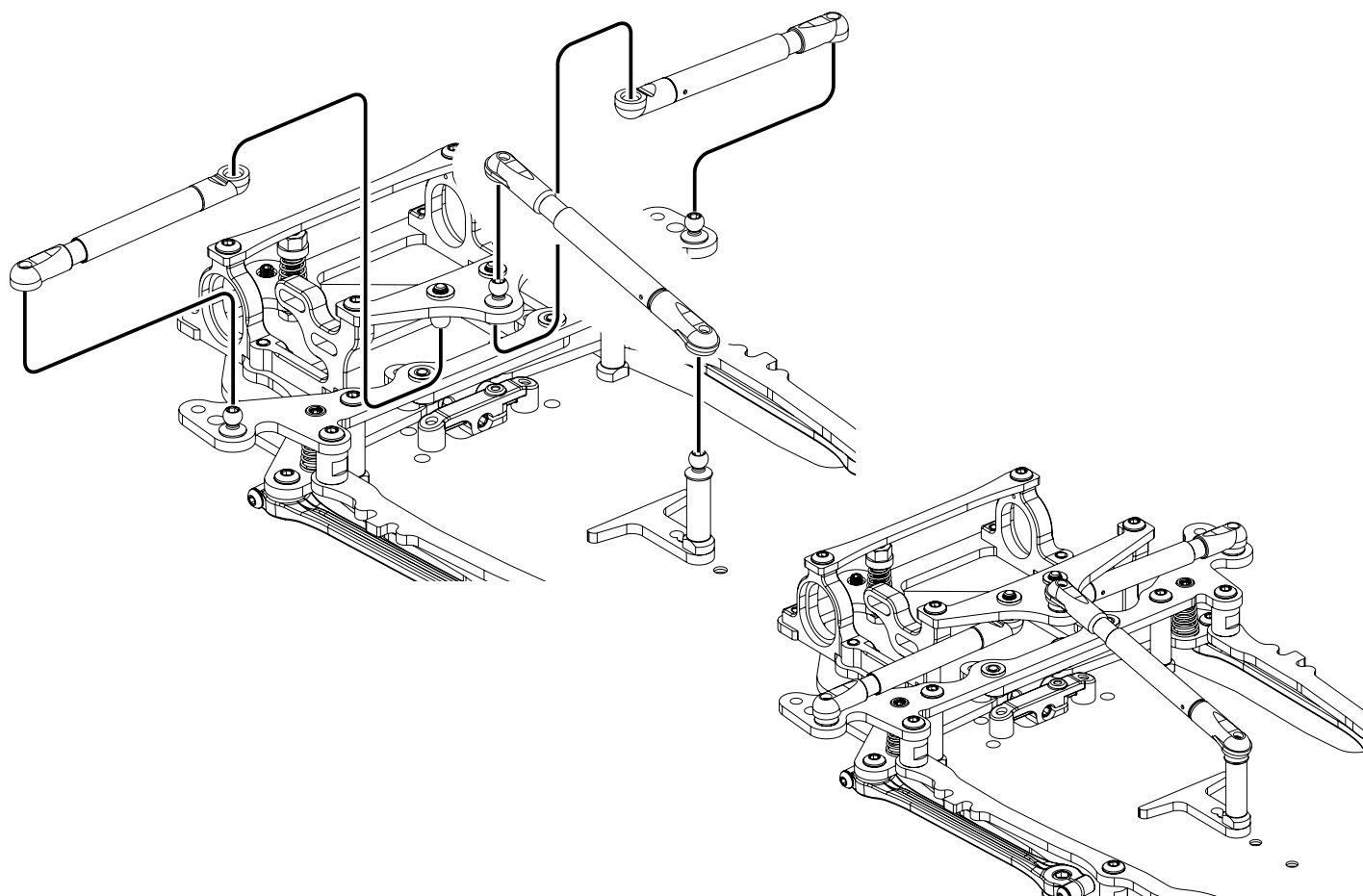
SILICONE  
OIL  
12000 cst

x 3  
M3 x 14

SILICONE  
OIL  
30000 cst

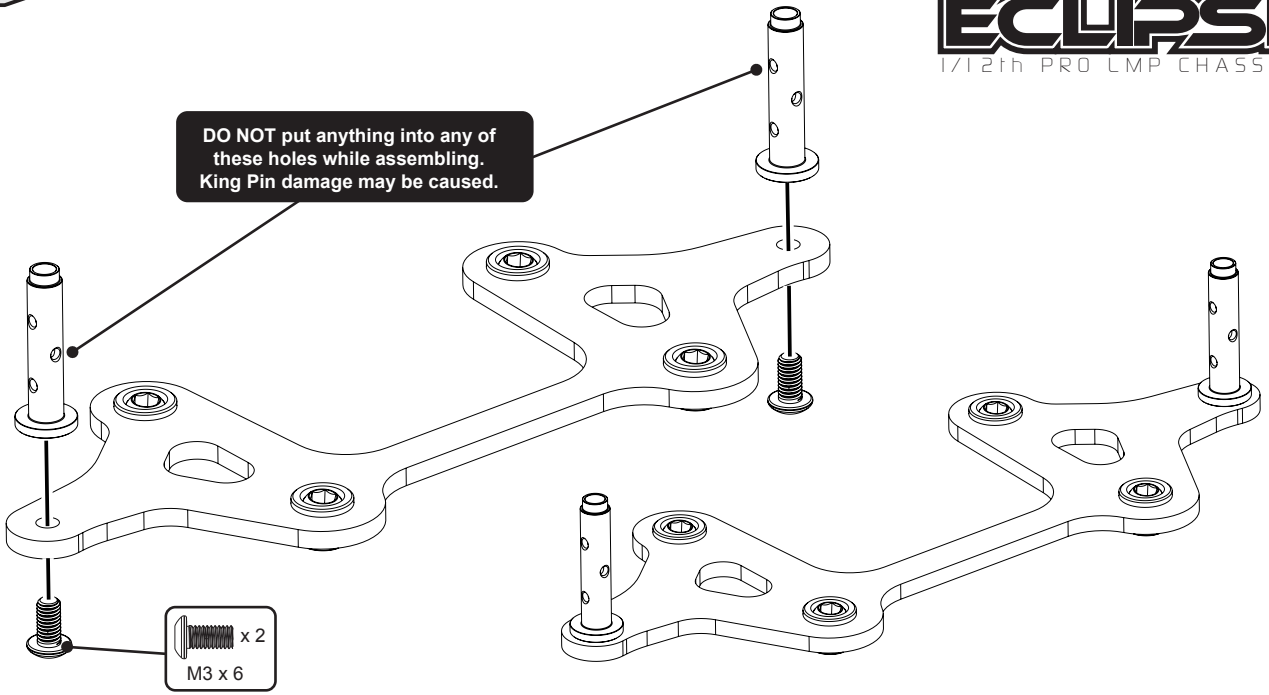
Use the included spanner  
to tighten sockets.

STEP 8B

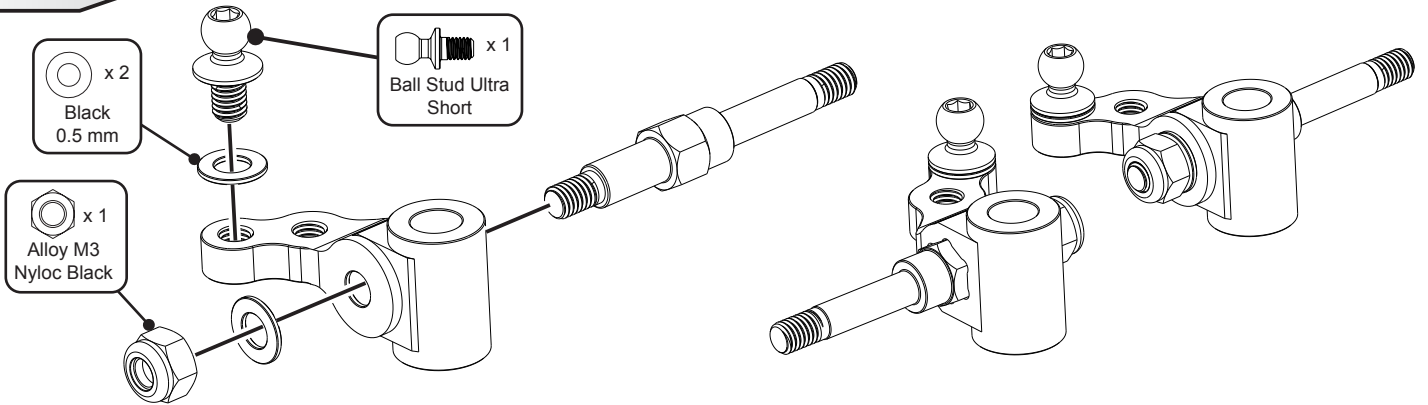


STEP 9

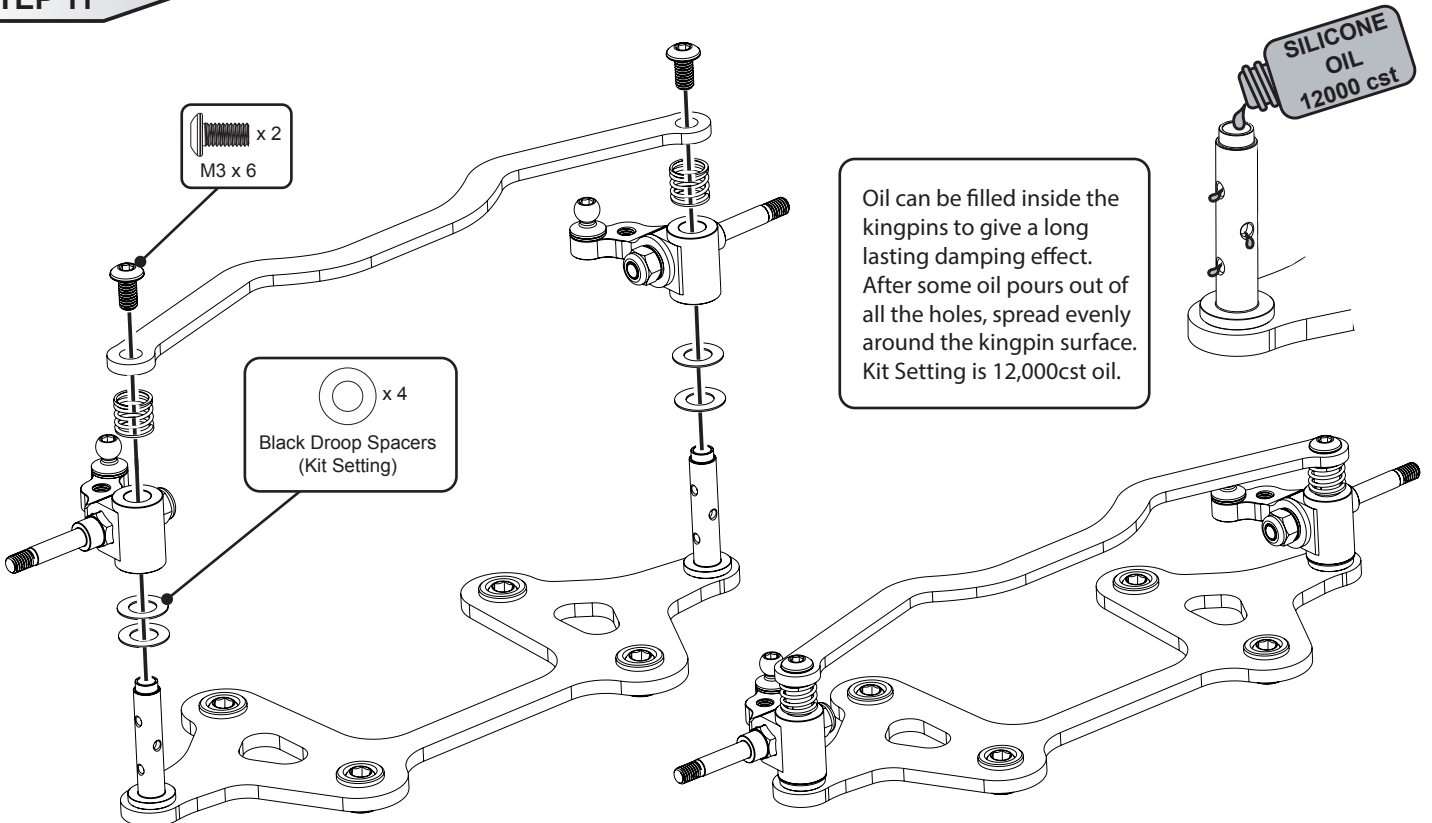
DO NOT put anything into any of these holes while assembling. King Pin damage may be caused.



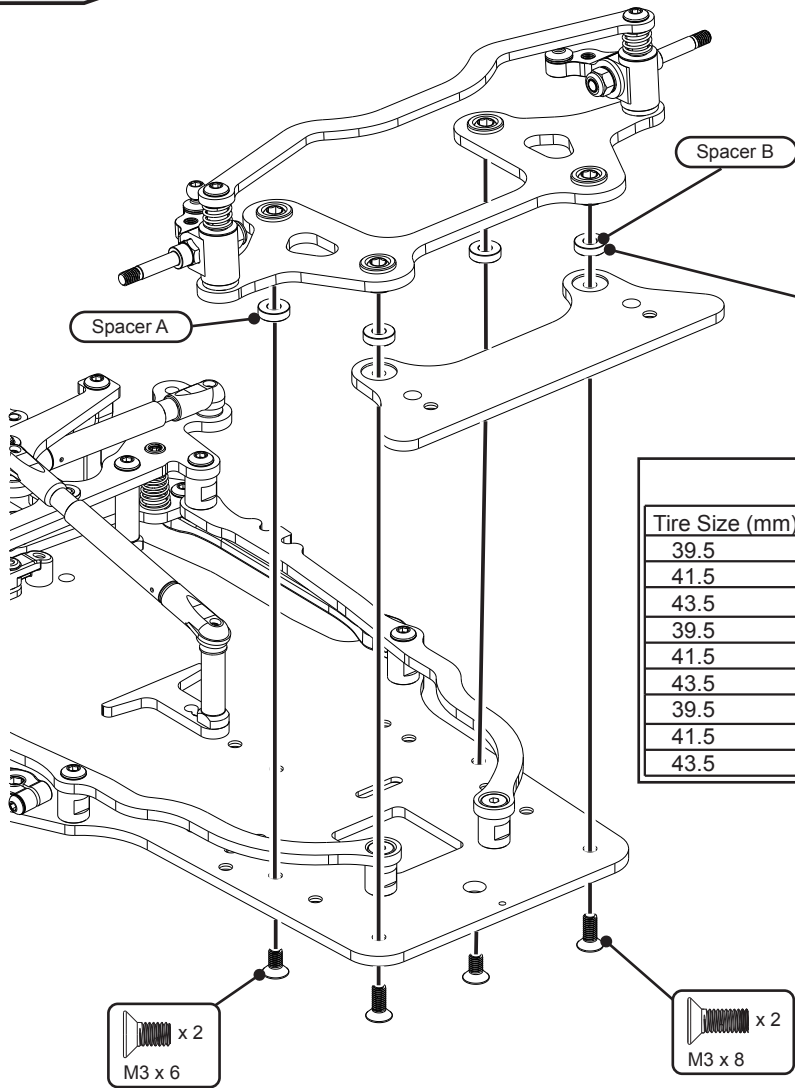
STEP 10



STEP 11



STEP 12



Adjusting the spacers under the beam sets ride height and caster.

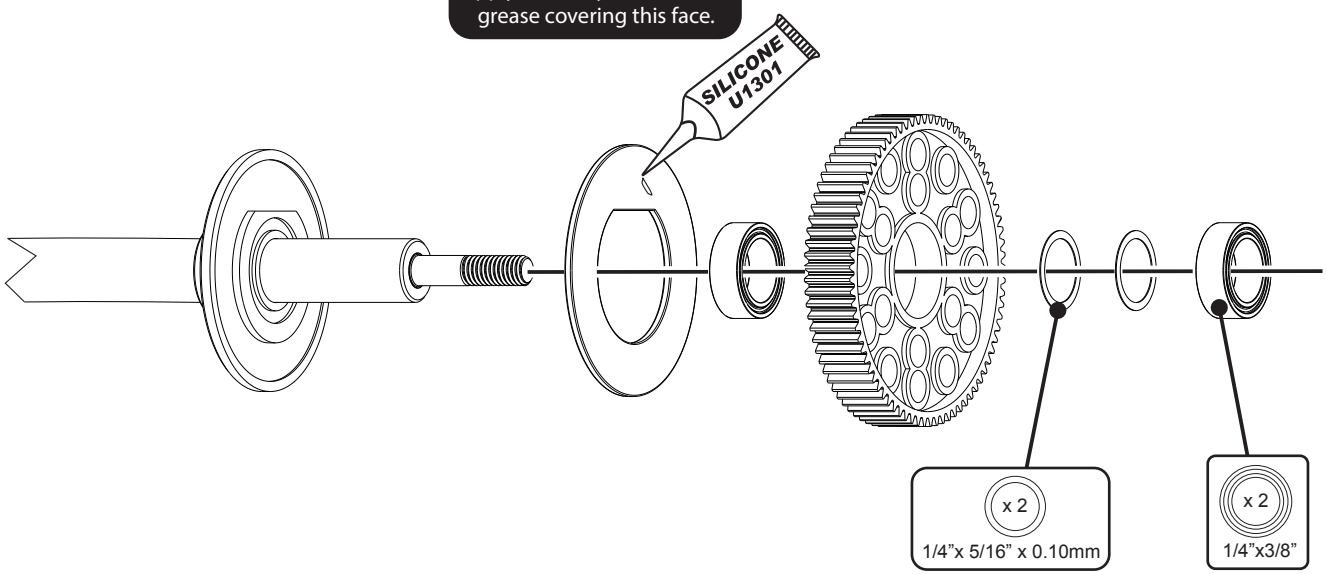


Tire Size (mm)	Ride Height (mm)	Caster	Spacer A (mm)	Spacer B (mm)
39.5	3.0	3°	0.0	0.0
41.5	3.0	3°	1.0	1.0
43.5	3.0	3°	2.0	2.0
39.5	3.0	4°	0.0	0.5
41.5	3.0	4°	1.0	1.5
43.5	3.0	4°	2.0	2.5
39.5	3.0	5°	0.0	1.0
41.5	3.0	5°	1.0	2.0
43.5	3.0	5°	2.0	3.0

**SPEED SECRETS**  
For quicker and easier adjustments see U7943 Alloy Spacer Clip 0.50mm and U7944 Alloy Spacer Clip 0.75mm

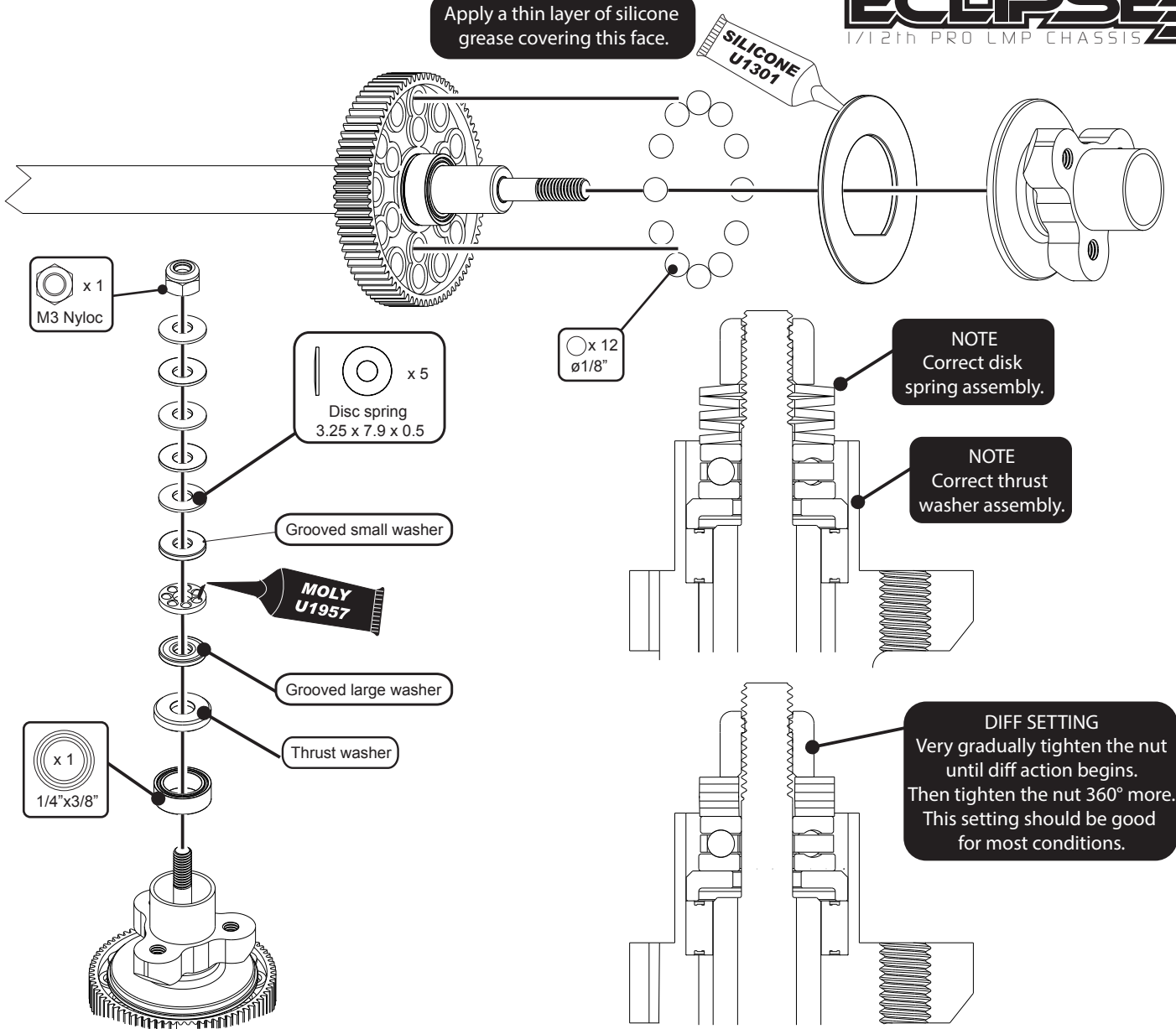
STEP 13

Apply a thin layer of silicone grease covering this face.

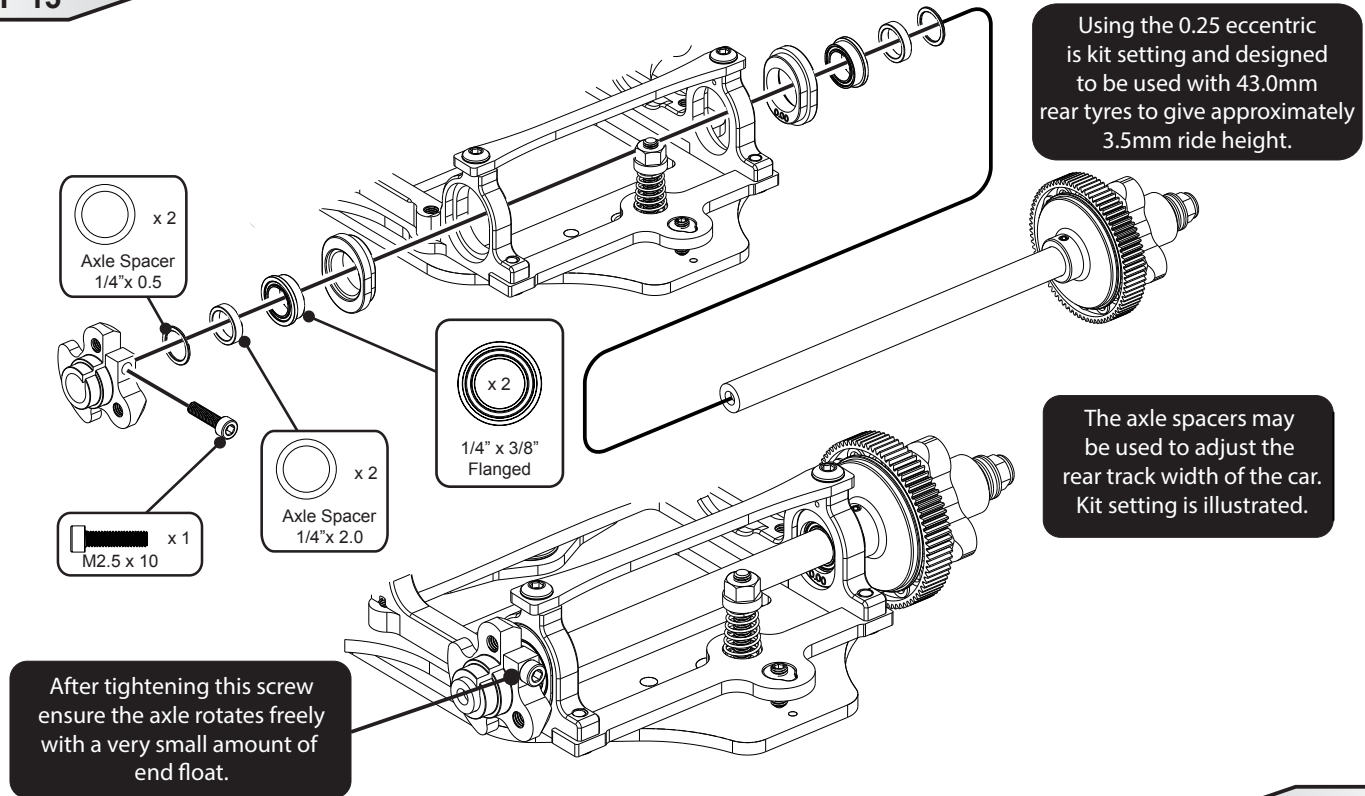


STEP 14

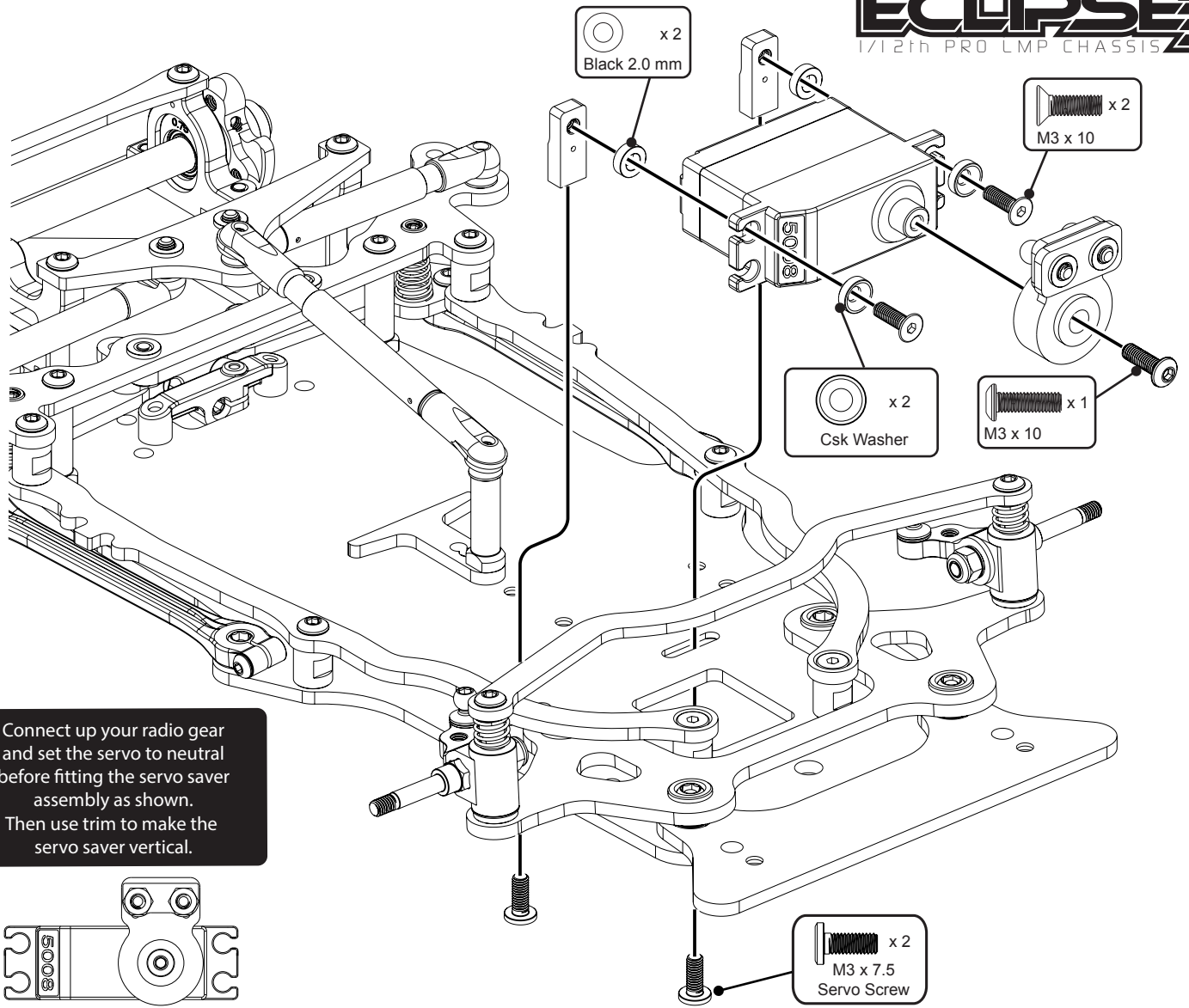
Apply a thin layer of silicone grease covering this face.



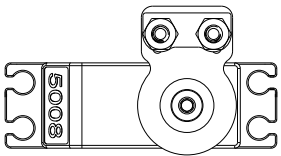
STEP 15



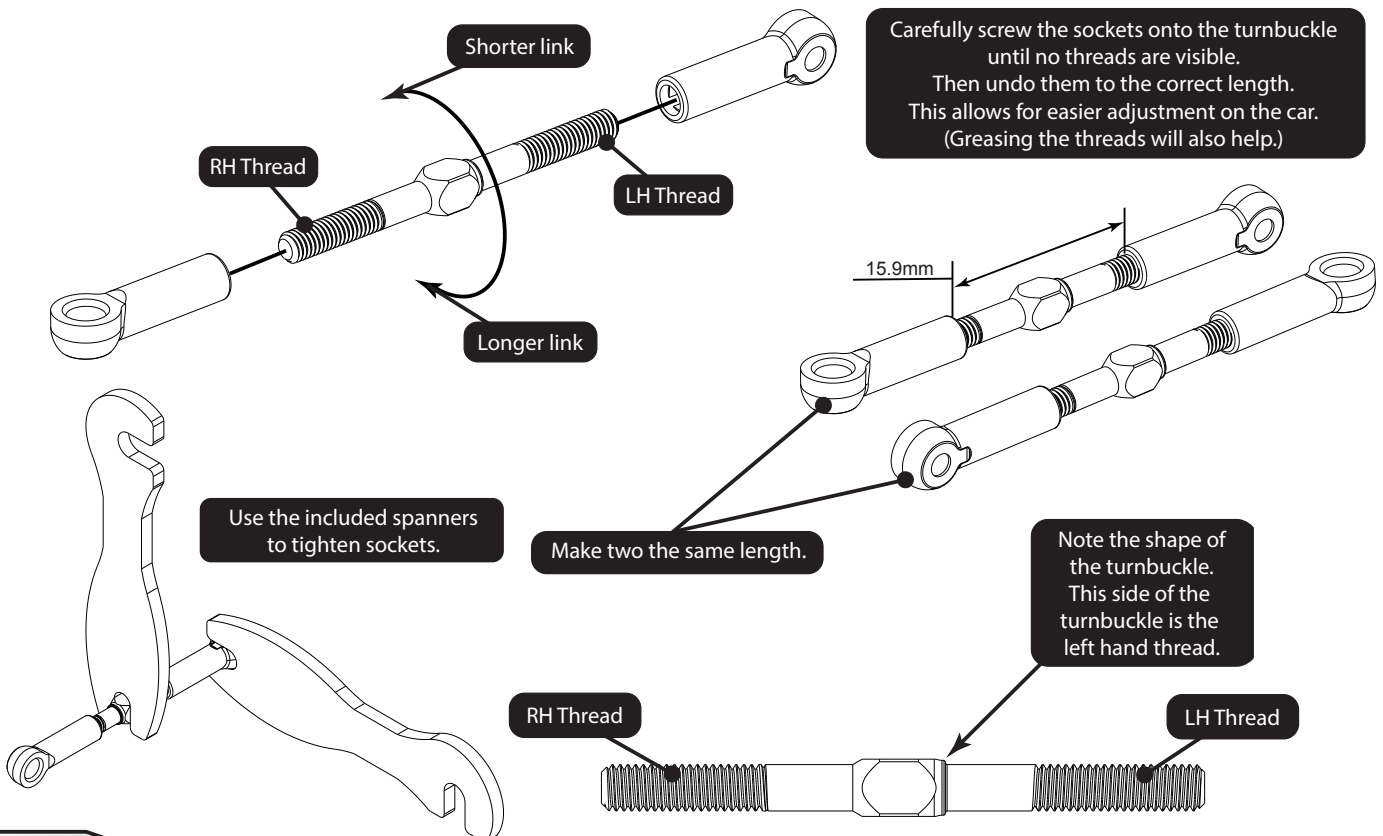
**STEP 16**



Connect up your radio gear and set the servo to neutral before fitting the servo saver assembly as shown. Then use trim to make the servo saver vertical.



**STEP 17A**

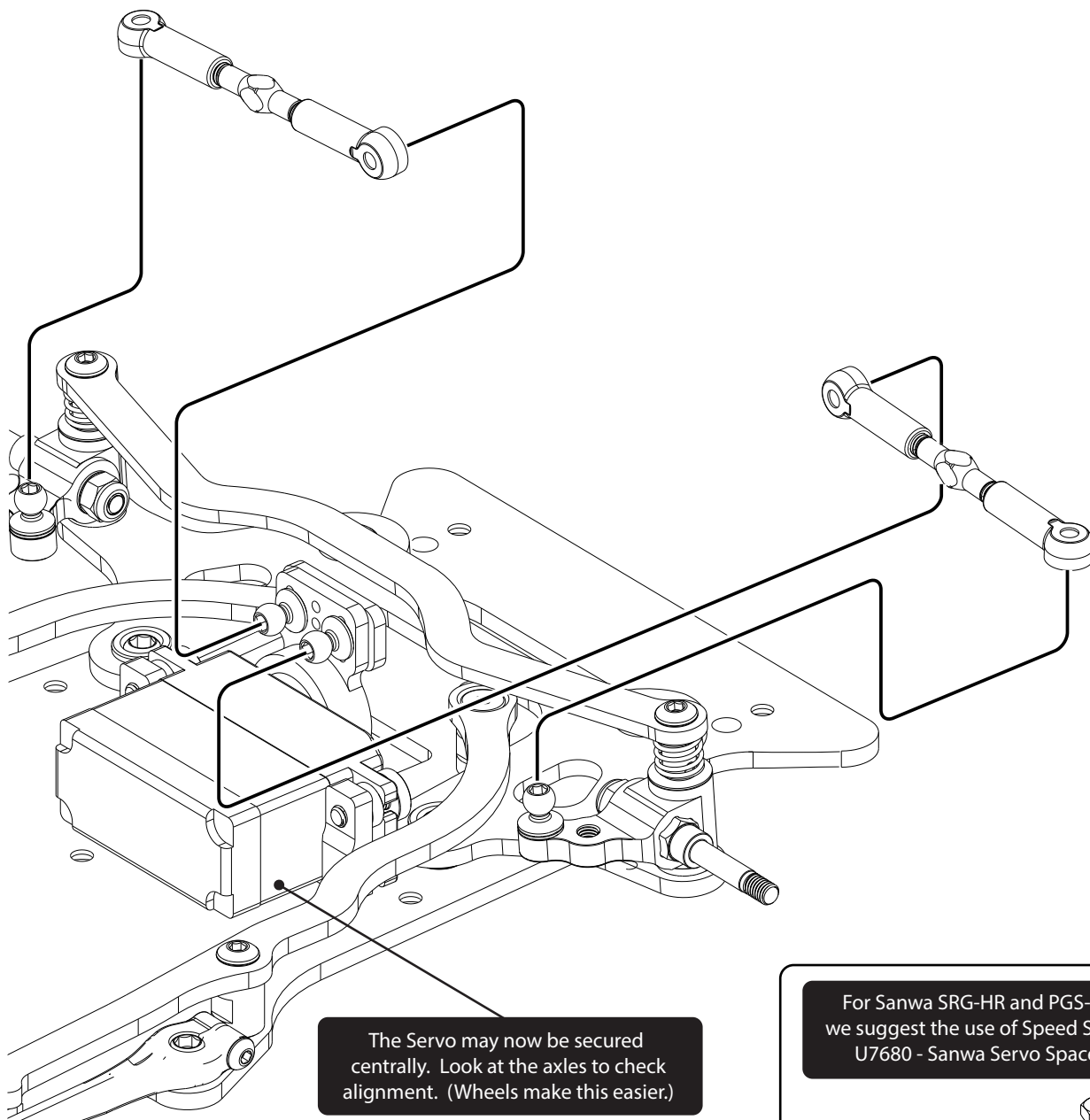


Carefully screw the sockets onto the turnbuckle until no threads are visible. Then undo them to the correct length. This allows for easier adjustment on the car. (Greasing the threads will also help.)

Use the included spanners to tighten sockets.

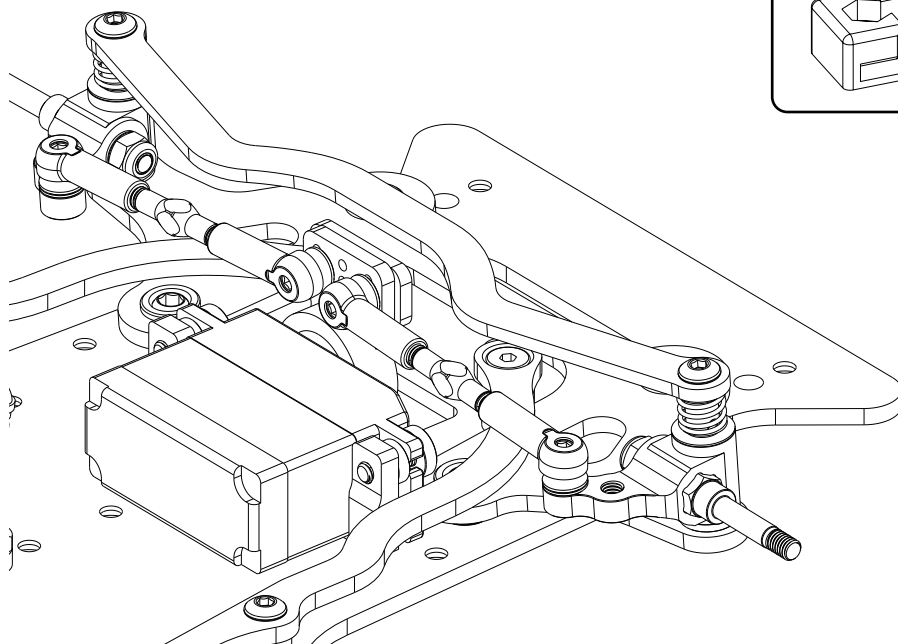
Make two the same length.

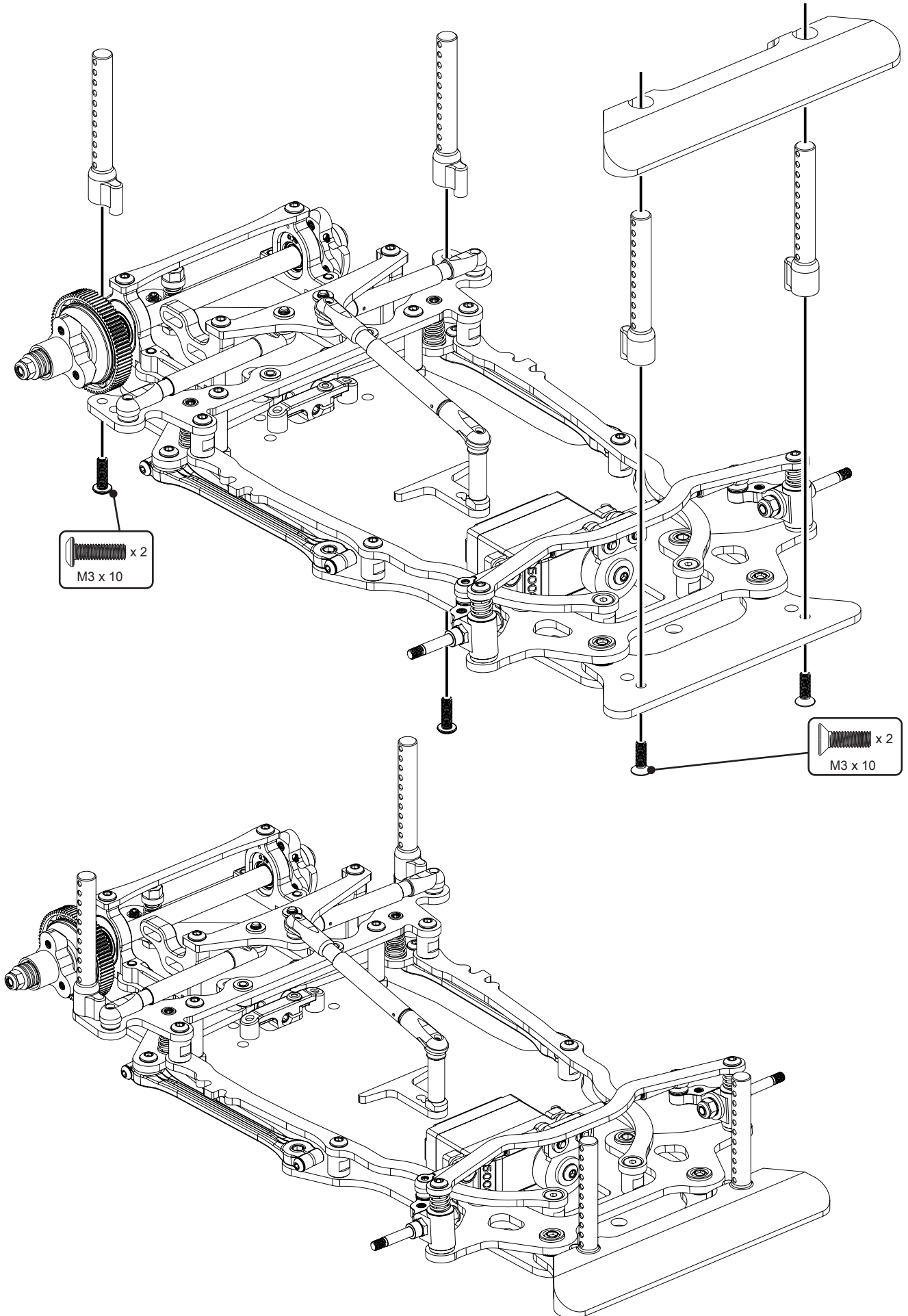
Note the shape of the turnbuckle. This side of the turnbuckle is the left hand thread.



For Sanwa SRG-HR and PGS-HR we suggest the use of Speed Secret U7680 - Sanwa Servo Spacer.

The diagram shows a U-shaped servo spacer component and a hex nut. The spacer is designed to fit between the servo tray and the servo motor to provide additional support and stability.

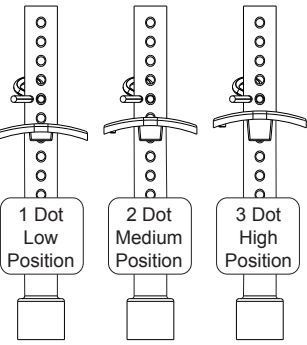




x 2  
M3 x 10

x 2  
M3 x 10

**Body Washers**  
Select the correct body washer to fine tune the bodyshell height. Each incremental change is 1.2mm.



Press the pins centrally into the post.

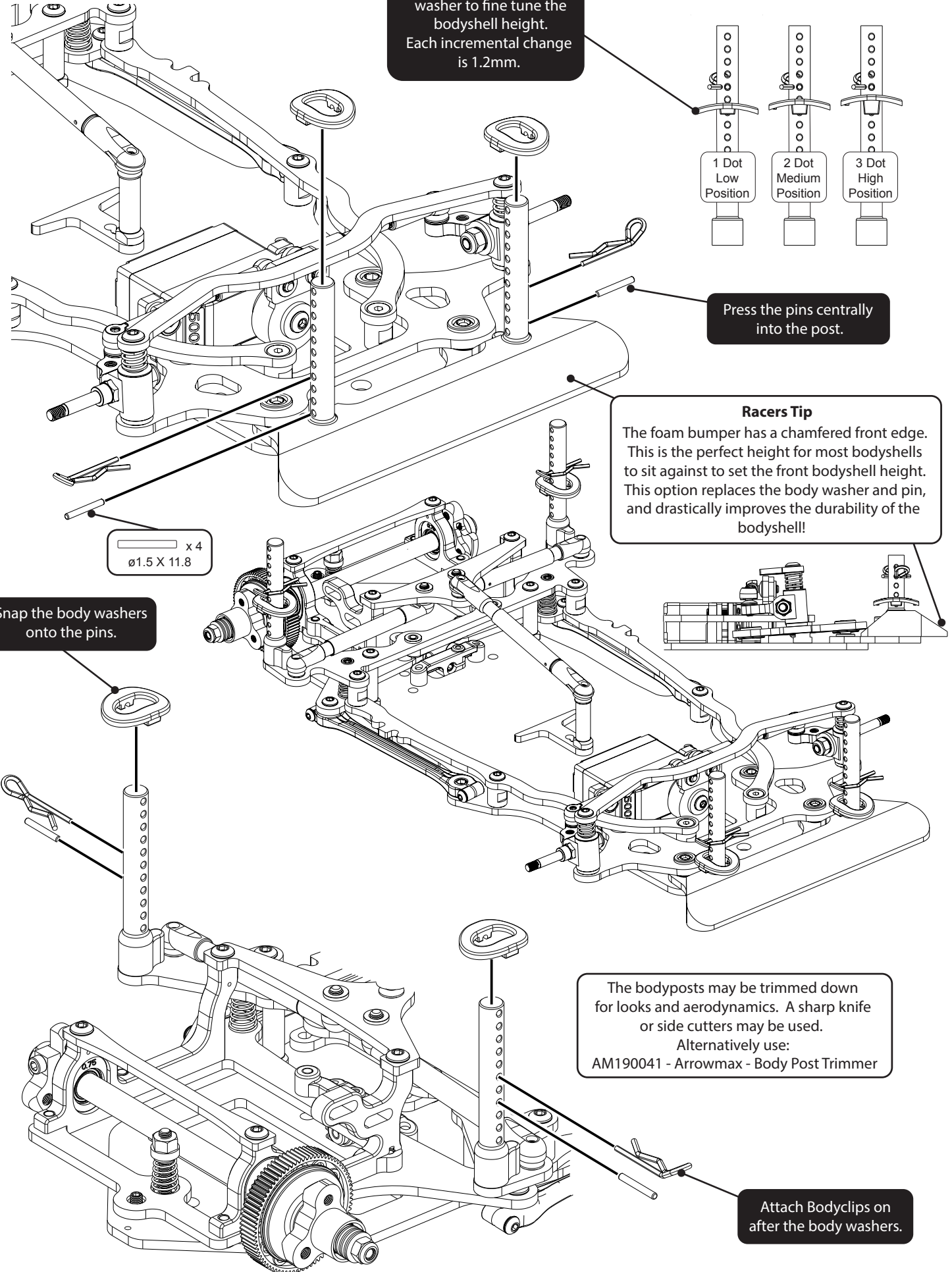
**Racers Tip**  
The foam bumper has a chamfered front edge. This is the perfect height for most bodyshells to sit against to set the front bodyshell height. This option replaces the body washer and pin, and drastically improves the durability of the bodyshell!

x 4  
ø1.5 X 11.8

Snap the body washers onto the pins.

The bodyposts may be trimmed down for looks and aerodynamics. A sharp knife or side cutters may be used.  
Alternatively use:  
AM190041 - Arrowmax - Body Post Trimmer

Attach Bodyclips on after the body washers.



**KIT**

K185 Eclipse 3 - 1/12th Circuit - Kit

**CHASSIS PARTS**

U4627 Chassis Post Long - SS GT/At/Ecl  
 U4950 Body Posts - Eclipse (4pcs)  
 U4964 C/F Pod Rear Brace - Eclipse  
 U7476 C/F Front Beam v2 - Eclipse 2  
 U7486 Alloy Servo Mounts - Eclipse 2  
 U7885 LiPo O'Ring - Atom 2 (pr)  
 U7895 25T Servo Saver Assembly  
 U7896 23T Servo Saver Assembly  
 U7911 C/F Front LiPo Stop - Atom 2  
 U7913 C/F Rear LiPo Stop - Atom 2  
 U7915 C/F Pod Base - Atom 2  
 U7917 C/F Rear Spring Hanger - Atom 2  
 U7930 C/F Bumper Mount - Eclipse 3  
 U7931 Foam Bumper - Eclipse 3  
 U7932 King Pin - Eclipse 3  
 U7934 C/F - Camber Strap 1.0 Deg (Kit) - Eclipse 3  
 U7938 Chassis Post 8mm - Eclipse 3  
 U7939 C/F Top Decks - Eclipse 3  
 U7940 C/F Chassis - Eclipse 3  
 U7941 C/F Multi Mount - Eclipse 3  
 U7942 C/F Damper Mount - Eclipse 3  
 U7945 Manual - Eclipse 3

**BodysHELLS And Decals**

MT014001 Montech M12 Body 1/12th carpet  
 MT016014 Montech M16 Body 1/12th carpet  
 MT018013 Montech M18 Carpet Body  
 MT018013L Montech M18 Carpet Body Light Weight  
 TB60025 Bomber LMP Body Type Ketter - Light Weight  
 TB60027 Bomber LMP Body Type Ketter - Ultra Light  
 U3478 Decal sheet - Schumacher and racing-cars.com (pk3)  
 U7946 Decals (Pre-cut) - Eclipse3

**Suspension**

U4254 Ball Grippa Sockets Pro - Mi5 - pk8  
 U4274 Pro Ball Stud Short - pk4  
 U4302 Ball Socket Short (Black) - Mi5 - pk4  
 U4629 Damper Piston - SS GT/At/Ecl  
 U4630 Damper Unit - SS GT/At/Ecl  
 U4631 Damper Tube - SS GT/At/Ecl  
 U4814 Front Axle - Atom  
 U4851 Side Spring Seat (pr) - Atom/Eclipse  
 U4865 Kingpin Shim Set - Atom  
 U4968 Ball Sockets Low Profile -Eclipse - pk4  
 U7315 Titanium Turnbuckle - 35mm - Silver - pr  
 U7436 Pivot Ball and Socket (pr)  
 U7787 Shock Top Ball Dia 5.5mm - Mi7 (pk4)  
 U7832 Ball Stud Low (Ultra Short) (pk4)  
 U7833 Ball Stud Low (Short) (pk4)  
 U7871 Pivot Mouldings - Atom 2  
 U7872 Side Link - Atom 2 (pr)  
 U7933 Alloy Hub Carrier - Eclipse 3

**Springs**

U4838 Rear Springs Black - Soft - At/Ecl - pr  
 U4839 Rear Springs Silver - Med/Soft - At/Ecl - pr  
 U4840 Rear Springs Gold -Med/Hard - At/Ecl - pr  
 U4841 Rear Springs Nickel - Hard - At/Ecl - pr  
 U4842 Front Springs Black - Soft - Atom (pr)  
 U4843 Front Springs Silver - Medium - Atom (pr)  
 U4844 Front Springs Gold - Hard - Atom (pr)  
 U4845 Spring Tuning Set Front - Atom  
 U4846 Spring Tuning Set Rear - At/Ecl  
 U4847 Rear Spring Seat - At/Ecl  
 U7322 Rear Spring Red Dot-Hard/Ultra-Atom/Eclipse-pr  
 U7323 Rear Spring Black - Ultra - Atom/Eclipse - pr  
 U7489 Front Springs White - Ultra - Atom/Eclipse 2 (pr)

**Transmission**

CR509 Kimbrough - Thin Pro/Gear 88T - 64DP-#709  
 CR513 Kimbrough - Spur Gear 78T - 64DP - #202  
 CR515 Kimbrough - Spur Gear 76T - 64DP - #199 - Kit  
 CRW64072 Diff Spur 64DP 72T - For Diff or Spur Adapters  
 U4112 S/Steel Shims 1/4x5/16x0.004-SS/At/Ecl  
 U4855 Diff Washer - Atom/Eclipse - pr  
 U4861 Diff Rebuild Kit - Atom/Eclipse  
 U4970 C/F Rear Axle - Eclipse  
 U4971 Diff Spacer Set - Eclipse

**TRANSMISSION Cont....**

U4972 Ride Height Adjusters- 0.00, 0.50, 1.00, 1.50 4prs  
 U4973 Ride Height Adjusters- 0.25, 0.75, 1.25, 1.75 4prs  
 U4974 LH Wheel Clamp - Eclipse  
 U4975 RH Washer Carrier - Eclipse  
 U4976 Assembled Diff C/F - Eclipse  
 U7483 Trans Housing LH - Eclipse 2  
 U7484 Trans Housing RH - Eclipse 2

**Pinions**

CR6419 Pinion Gear 64DP 19T (7075 Hard)  
 CR6420 Pinion Gear 64DP 20T (7075 Hard)  
 CR6421 Pinion Gear 64DP 21T (7075 Hard)  
 CR6422 Pinion Gear 64DP 22T (7075 Hard)  
 CR6423 Pinion Gear 64DP 23T (7075 Hard)  
 CR6424 Pinion Gear 64DP 24T (7075 Hard)  
 CR6425 Pinion Gear 64DP 25T (7075 Hard)  
 CR6426 Pinion Gear 64DP 26T (7075 Hard)  
 CR6427 Pinion Gear 64DP 27T (7075 Hard)  
 CR6428 Pinion Gear 64DP 28T (7075 Hard)  
 CR6429 Pinion Gear 64DP 29T (7075 Hard)  
 CR6430 Pinion Gear 64DP 30T (7075 Hard)  
 CR6431 Pinion Gear 64DP 31T (7075 Hard)  
 CR6432 Pinion Gear 64DP 32T (7075 Hard)  
 CR6433 Pinion Gear 64DP 33T (7075 Hard)  
 CR6434 Pinion Gear 64DP 34T (7075 Hard)  
 CR6435 Pinion Gear 64DP 35T (7075 Hard)  
 CR6436 Pinion Gear 64DP 36T (7075 Hard)  
 CR6437 Pinion Gear 64DP 37T (7075 Hard)  
 CR6438 Pinion Gear 64DP 38T (7075 Hard)  
 CR6439 Pinion Gear 64DP 39T (7075 Hard)  
 CR6440 Pinion Gear 64DP 40T (7075 Hard)  
 CR6441 Pinion Gear 64DP 41T (7075 Hard)  
 CR6442 Pinion Gear 64DP 42T (7075 Hard)  
 CR6443 Pinion Gear 64DP 43T (7075 Hard)  
 CR6444 Pinion Gear 64DP 44T (7075 Hard)  
 CR6445 Pinion Gear 64DP 45T (7075 Hard)  
 CR6446 Pinion Gear 64DP 46T (7075 Hard)  
 CR6447 Pinion Gear 64DP 47T (7075 Hard)  
 CR6448 Pinion Gear 64DP 48T (7075 Hard)  
 CR6449 Pinion Gear 64DP 49T (7075 Hard)  
 CR6450 Pinion Gear 64DP 50T (7075 Hard)  
 CR6451 Pinion Gear 64DP 51T (7075 Hard)  
 CR6452 Pinion Gear 64DP 52T (7075 Hard)  
 CR6453 Pinion Gear 64DP 53T (7075 Hard)  
 CR6454 Pinion Gear 64DP 54T (7075 Hard)  
 U3619 Pinion; Hard Alloy 64dp - 19T  
 U3620 Pinion; Hard Alloy 64dp - 20T  
 U3621 Pinion; Hard Alloy 64dp - 21T  
 U3622 Pinion; Hard Alloy 64dp - 22T  
 U3623 Pinion; Hard Alloy 64dp - 23T  
 U3624 Pinion; Hard Alloy 64dp - 24T  
 U3625 Pinion; Hard Alloy 64dp - 25T  
 U3626 Pinion; Hard Alloy 64dp - 26T  
 U3627 Pinion; Hard Alloy 64dp - 27T  
 U3628 Pinion; Hard Alloy 64dp - 28T  
 U3629 Pinion; Hard Alloy 64dp - 29T  
 U3630 Pinion; Hard Alloy 64dp - 30T  
 U3631 Pinion; Hard Alloy 64dp - 31T  
 U3632 Pinion; Hard Alloy 64dp - 32T  
 U3633 Pinion; Hard Alloy 64dp - 33T  
 U3634 Pinion; Hard Alloy 64dp - 34T  
 U3635 Pinion; Hard Alloy 64dp - 35T  
 U3636 Pinion; Hard Alloy 64dp - 36T  
 U3637 Pinion; Hard Alloy 64dp - 37T  
 U3638 Pinion; Hard Alloy 64dp - 38T  
 U3639 Pinion; Hard Alloy 64dp - 39T  
 U3640 Pinion; Hard Alloy 64dp - 40T  
 U3641 Pinion; Hard Alloy 64dp - 41T  
 U3642 Pinion; Hard Alloy 64dp - 42T  
 U3643 Pinion; Hard Alloy 64dp - 43T  
 U3644 Pinion; Hard Alloy 64dp - 44T  
 U3645 Pinion; Hard Alloy 64dp - 45T  
 U3646 Pinion; Hard Alloy 64dp - 46T  
 U3647 Pinion; Hard Alloy 64dp - 47T  
 U3648 Pinion; Hard Alloy 64dp - 48T  
 U3649 Pinion; Hard Alloy 64dp - 49T  
 U3650 Pinion; Hard Alloy 64dp - 50T

## Speed Packs

U1550	SPEED PK-Socket Wrenches-1.5/2.0/2.5/3.0mm
U1552	SPEED PACK - R Clips
U1606	SPEED PACK - Servo Tape - 30pk
U3021	SPEED PACK - M3x6 Csk Hd - (pk10)
U3022	SPEED PACK - M3x8 Csk Hd - (pk10)
U3023	SPEED PACK - M3x10 Csk Hd - (pk10)
U3131	SPEED PACK Alloy Spacers - M3x7mm 0.5;1;2mm (pk18)
U3572	SPEED PACK - M3x14 Grub Screw pk4
U4155	SPEED PACK - M3 Csk Washers - Black Alloy (pk10)
U4210	SPEED PACK - Pinion Grub Screw Set pk10
U4241	SPEED PACK - M3 Alloy Nyloc Nuts - Black - pk10
U4650	SPEED PACK - M3 Nyloc Nut Steel - Black (10pcs)
U4837	SPEED PACK M2.5x10 Cap Hd (pk8)
U4862	M3 Black Alloy Washers 0.50mm (pk12)
U4983	SPEED PACK Servo Screws (2pcs)
U4984	SPEED PACK M3 Alloy Nuts - Black - pk10
U4987	SPEED PACK Needle Roller 1.5x11.8 (pk8)
U7102	SPEED PACK - M3x4 Button Hd (pk10)
U7103	SPEED PACK - M3x6 Button Hd (pk10)
U7104	SPEED PACK - M3x8 Button Hd (pk10)
U7105	SPEED PACK - M3x10 Button Hd (pk10)
U7113	SPEED PACK - M3x10 Cap Hd (pk10)
U7125	SPEED PACK - M3x25 Csk Hd (pk10)
U7298	Alloy Rear Wheel Screws - Atom/Eclipse (pk6)
U7689	M3 Brass Inserts (pk10)
U7710	M3 Black Alloy Washers 1.00mm (pk10)
U7711	M3 Black Alloy Washers 2.00mm (pk10)
U7743	SPEED PACK - M2.5x8 Button Screws (pk10)
U7884	M3x6 Grub Screw Dome End (pk4)

## Speed Secret - Option Parts

CR280	Ti Pro Ball Studs - Short (pr)
CR310	Alloy Csk Hex Screws M3 x 6 pk10
CR311	Alloy Csk Hex Screws M3 x 8 pk10
CR312	Alloy Csk Hex Screws M3 x 10 pk10
CR314	Alloy Button Head Hex Screws M3 x 6 pk10
CR315	Alloy Button Head Hex Screws M3 x 8 pk10
CR316	Alloy Button Head Hex Screws M3 x 10 pk10
CR320	Titanium Csk Hex Screws M3 x 6 pk10
CR321	Titanium Csk Hex Screws M3 x 8 pk10
CR322	Titanium Csk Hex Screws M3 x 10 pk10
CR327	Titanium Button Hex Screws M3 x 6 pk10
CR328	Titanium Button Hex Screws M3 x 8 pk10
CR329	Titanium Button Hex Screws M3 x 10 pk10
CR664	Alloy Motor Spacer - 1mm - pk2
CR721	1/12 Carbon Spool Axle + Clamp
U1954	Pro - Thrust Bearing
U3582	Precision Balance Pivot Set
U7453	30/40mm Fan Mount Kit - ATOM
U7680	Sanwa Servo Spacer - Eclipse 2 (pr)
U7709	M3 Black Alloy Washers 0.75mm (pk10)
U7710	M3 Black Alloy Washers 1.00mm (pk10)
U7711	M3 Black Alloy Washers 2.00mm (pk10)
U7712	M3 Black Alloy Washers 3.00mm (pk10)
U7774	M3 Black Alloy Washers 1.50mm (pk10)
U7825	Titanium Pivot Ball 5.5mm Low (pr)
U7828	Titanium Ball Stud Low (Ultra Short) (pk4)
U7829	Titanium Ball Stud Low (Short) (pk4)
U7883	Steel Diff Axle - Atom 2
U7897	Alloy Pivot Spacer 1mm - Atom 2 (pr)
U7918	Alloy Pivot Mount - Atom 2
U7919	Alloy Pivot Block - Atom 2
U7935	C/F - Camber Strap 1.5 Deg - Eclipse 3
U7936	Titanium King Pin - Eclipse 3 (pr)
U7937	Titanium Front Axle - Eclipse 3 (pr)
U7943	Alloy Spacer Clip 0.5mm (pk4)
U7944	Alloy Spacer Clip 0.75mm (pk4)

## Tyre Additive

C6400	CS High Grip Additive
C6460	CS Speed Grip Carpet
LRP65011	Top Grip Carpet 2
LRP65012	Top Grip Carpet 3 Tyre Traction
MR33-0002	MR33 No 1 Black Indoor/Outdoor Tyre Additive
SXT00030	SXT 3.0 Traction Compound Additive

## Servos

CR194	CORE RC -5008- Servo 5Kg .08 Sec 12th
KO30126	KO RSx3-12 Servo
KO30127	KO RSx3-12 World Spec Version Servo
KO30128	KO RSx3-12 GT Version Servo
KO30129	KO RSx3-12 HC Servo
KO92392	KO RS Set w/RSx3-12
SA107A53811A	Sanwa SRG-HR Mini Digital Servo
SA107A54573A	Sanwa PGS-HR Servo

## Team Merchandise

CR298	CORE RC Hauler Bag
G338	2 Tone Beanie Knitted Hat
G339L	Jacket - 3 Layer Softshell; Black - L 44inch
G339M	Jacket - 3 Layer Softshell; Black - M 41inch
G339S	Jacket - 3 Layer Softshell; Black - S - 38inch
G339XL	Jacket - 3 Layer Softshell; Black - XL 46inch
G339XS	Jacket - 3 Layer Softshell; Black - XS - 34inch
G339XXL	Jacket - 3 Layer Softshell; Black - XXL 48inch
G339XXXL	Jacket - 3 Layer Softshell; Black - XXXL 50inch
G346L	Schumacher Gilet - Frost Grey - Large
G346M	Schumacher Gilet - Frost Grey - Medium
G346S	Schumacher Gilet - Frost Grey - Small
G346XL	Schumacher Gilet - Frost Grey - X-Large
G346XXL	Schumacher Gilet - Frost Grey - XX-Large
G347L	Schumacher Arrows" T-Shirt - Large"
G347M	Schumacher Arrows" T-Shirt - Medium"
G347S	Schumacher Arrows" T-Shirt - Small"
G347XL	Schumacher Arrows" T-Shirt - X-Large"
G347XS	Schumacher Arrows" T-Shirt - X-Small"
G347XXL	Schumacher Arrows" T-Shirt - XXL"
G347XXS	Schumacher Arrows" T-Shirt - XX-Small"
G347XXXL	Schumacher Arrows" T-Shirt - XXXL"
G347XXXXL	Schumacher Arrows" T-Shirt - XXXXL"
G347XXXXXL	Schumacher Arrows" T-Shirt - XXXXXL"
G347XXXXXXL	Schumacher Arrows" T-Shirt - XXXXXXL"
G348L	Schumacher Arrows" Hoody - Large"
G348M	Schumacher Arrows" Hoody - Medium"
G348S	Schumacher Arrows" Hoody - Small"
G348XL	Schumacher Arrows" Hoody - XL"
G348XS	Schumacher Arrows" Hoody - XS"
G348XXL	Schumacher Arrows" Hoody - XXL"
G348XXXL	Schumacher Arrows" Hoody - XXXL"
G349L	Schumacher Arrows" Zipped Hoody - Large"
G349M	Schumacher Arrows" Zipped Hoody - Medium"
G349S	Schumacher Arrows" Zipped Hoody - Small"
G349XL	Schumacher Arrows" Zipped Hoody - XL"
G349XXL	Schumacher Arrows" Zipped Hoody - XXL"
G350L	Schumacher Arrows" Polo Shirt-Large"
G350M	Schumacher Arrows" Polo Shirt-Medium"
G350S	Schumacher Arrows" Polo Shirt-Small"
G350XL	Schumacher Arrows" Polo Shirt-XL"
G350XXL	Schumacher Arrows" Polo Shirt-XXL"
G350XXXL	Schumacher Arrows" Polo Shirt-XXXL"
G350XXXXL	Schumacher Arrows" Polo Shirt-XXXXL"
G350XXXXXL	Schumacher Arrows" Polo Shirt-XXXXXL"
G355	Schumacher Hauler Bag
G356	Handle for Hauler Bag
G357	Small Drawer for Hauler Bag
G358	Medium Drawer for Hauler Bag
G359	Large Drawer for Hauler Bag
G360	Schumacher Snapback Flatbill Cap-Heather
G361	Schumacher Flexfit Cap S/M - Grey
G362	Schumacher Flexfit Cap L/XL - Grey

## Electronics

CR175	GT12 Power Plant-PACE ESC/SP 13.5/1S Lipo
CR249	Futaba Servo Wires Black
CR250	JR Servo Wires Black
CR251	Freeze Cooling Fan 40 x 40mm
CR264	Freeze 30 x 30mm Cooling Fan with JST Plug
CR665	LiPo Voltage Checker
MR33-CF40	MR33 Cooling Fan 40mm
SK-500015	Corner Weight System
SK-600114-01	DC Power Distributor

## Bearings and Balls

H1031	Bearing Blaster Aerosol 500ml
U1300	Axle Grease - Pot
U1301	Silicone Diff Lube - Pot
U1957	Moly Grease - Pot 5ml
U4808	1/8 Chrome Steel Ball -At/Ecl - pk12"
U4809	Ball Bearing - 1/4x3/8x1/8 Shield - (pr)
U4811	1/8 Silicone Nitride Ball (pk12)"
U4812	Ceramic Bearing 1/8x5/16x9/64 Flanged (pr)
U4979	Ceramic Bearing 1/4 x 3/8 x 1/8 Flanged (pr)
U4980	Ball Bearing - 1/4x3/8x1/8 Flanged Yellow - (pr)
U4981	Ball Bearing-1/8x5/16 Flanged Yellow -(pr)
U7690	Pro Ball Bearings 1/4 x 3/8 x 1/8 FI Shielded
U7691	Pro Ball Bearings 1/8 x 5/16 x 9/64 FI Shielded

## Transmitters and Receivers

CR277	CODE 2.4G FHSS Steerwheel Radio TxRx
CR278	CODE 2.4G FHSS - Rx Only
KO21005	KO KR-211FH 2.4GHz FHSS Receiver
KO21008	KO KR-241FH 2.4GHz FHSS
KO21009	KO KR-415FHD
KO21010	KO KR-415FHD (Short Antenna)
KO21011	KO KR-418FH 4 Channels Receiver - 2.4GHZ
KO80576	KO EX-RR w/KR-415FHD
KO80700	KO Esprit IV - Stick Radio Combo
SA101A31971A	Sanwa MT-S Radio Set with RX482
SA101A32071A	Sanwa EXZES ZZ Radio Set with RX472
SA101A32171A	Sanwa MT-44 Radio Set with RX-482
SA101A32371A	Sanwa M12S-RS Radio Set with RX482
SA101A32471A	Sanwa M17 Radio Set with RX491
SA101A32571A	Sanwa MX-6 Radio Set with RX-391W
SA107A40843A	Sanwa RX-371FS FHSS-2 Receiver
SA107A41044A	Sanwa RX-461 Receiver for MT-4
SA107A41074A	Sanwa RX-380 FHSS-3 Receiver
SA107A41111A	Sanwa RX-471 Receiver
SA107A41117A	Sanwa RX-472 Telemetry/SSL Receiver
SA107A41131A	Sanwa RX-471WP FH4 Waterproof Receiver
SA107A41144A	Sanwa RX-371WP FHSS-2 Waterproof Receiver
SA107A41151A	Sanwa RX-471 Dual ID Receiver
SA107A41251A	Sanwa RX-481 Receiver
SA107A41257A	Sanwa RX-482 Telemetry/SSL Receiver
SA107A41341A	Sanwa RX-391W Receiver
SA107A41353A	Sanwa RX-491 Receiver

## Chargers and Dischargers

AM701000	AM Auto Balance Charger&Discharger
CR031	CORE RC Charger Connector Set - 8pcs (10Amps max)
SK-100084	Imax B6 Mini Charger 6A 60W DC
SK-100104	Q200 Quattro Charger
SK-100122	e450 Charger 50W - 4A - AC
SK-100123	D400 Charger
SK-100124	PC1080 Dual Charger
SK-100129	Ultimate Duo D250 Charger
SK-100131	D100 v2 AC/DC Dual Balance Charger
SK-100134	B6 nano Charger
SK-100146	SKY RC B6 Nano Duo AC Charger
SK-100149	SKY RC e680 AC/DC 80W Charger
SK-100151	SKY RC B6 Lite DC Charger
SK-100152-04	S65 Charger AC 65W
SK-100155-04	SKY RC T200 AC/DC 12A Charger
SK-200013-01	eFuel 30A 540W Power Supply
SK-200015	eFuel 50A 1200W Power Supply
SK-600123-01	BD200 Battery Discharger & Analyzer

## Brushless Motors

DA740175	DASH R-Tune 540 Sensored BL Motor 17.5T
DA741135	DASH 540 Sensored BL Motor 13.5T for AM Cup
FAN19213S	Fantom 13.5T ICON Torque Spec
FAN19217S	Fantom 17.5T ICON Torque Spec
FAN19313S	Fantom 13.5 ICON Pro Spec Motor
FAN19336E	Fantom 6.5 ICON Euro Pro Spec Motor
HW30401104	XERUN-V10-17.5T-Black-G3-BL-Motor
HW30401106	XERUN-V10-3.5T-Black-G3-BL-Motor
HW30401109	XERUN-V10-6.5T-Black-G3-BL-Motor
HW30401112	XERUN-V10-10.5T-Black-G3-BL-Motor
HW30401123	XERUN-V10-6.5T Motor - G3 - Onroad Spec
HW30401130	XERUN-V10-13.5T-Black-G3R-BL-Motor
HW30401131	XERUN-V10-17.5T-Black-G3R-BL-Motor
HW30404310	QUICRUN - 3650 - G2 - Motor - 13.5T
HW30408005	XERUN - Justock - G2 - Motor - 13.5T -Fixed Timing
HW30408010	XERUN Justock G2.1 Motor 13.5T Fixed Timing
HW90040120	XERUN - 1/10 - Sensored - BL - Motor - 13.5T
LRP520006	X22 Modified Motor 6.5T
LRP520200	X22 Stock Spec Motor - 10.5T
LRP520201	X22 Stock Spec Motor - 13.5T
LRP520202	X22 Stock Spec Motor - 17.5T
LRP520305	X22 N.B. Modified Motor - 6.5T
SK-400003-56	ARES Pro V2.1 Modified Motor 6.5T
SK-400003-57	ARES V2.1 Spec Motor 10.5T
SK-400003-58	ARES V2.1 Spec Motor 13.5T
SK-400003-59	ARES V2.1 Spec Motor 17.5T
SK-400003-61	ARES Pro V2.1 Modified Motor 3.5T

## Brushless Accessories

CR134	Core Sensor Lead; 180mm
CR254	150mm Flat Bonded Flex Sensor Wire
CR651	150mm Super Flex 26GA Silicone sensor Wire
CR652	125mm Super Flex 26GA Silicone Sensor Wire
LRP819315	Sensor Wire Highflex 150mm
MR33-CF30	MR33 Cooling Fan 30mm

## Brushless Speed Controls

CR173	PACE 45R Brushless ESC 1s/2s
CR174	PACE 45R/60R Programming Card
CR199	PACE 60R Brushless ESC 1S/2S
HW30112121051	XERUN - V3.1 - 1S - BL - ESC - 120A - Black
HW30112603	XERUN - XR10 - Pro - 1S - 120A - ESC
HW30112609	XERUN - XR10 - Pro-1S Heavy Duty-V4.1 Black
HW30112751	XERUN - XR10 - Pro - Stock Spec - 1S - V4 - Black

## Batteries

AM700301	AM Lipo 6200mAh 1s 3.7V - 65/130C
AM700302	AM Lipo 8000mAh 1s 3.7V - 55/110C
AM700303	Lipo 8000mAh 1/12 -3.7V-60/120C Si-Graphene
CR007	CORE RC Silicone Wire 12g - Red/Black 2x50cm
CR009	CORE RC RED Connector with 2x4mm Males
CR050	CORE RC Silicone Wire 12AWG - Red 1 Metre
CR051	CORE RC Silicone Wire 12AWG - Black 1 Metre
CR052	CORE RC Silicone Wire 12AWG - Blue 1 Metre
CR115	CORE RC Silicone Wire 12g - Red/Black/Blue 3x50cm
CR279	1S Lipo 8000mAh 100C Pro Series - 3.7V
CR287	Silicone Wire Black 14 AWG - 1Mtr
CR288	Silicone Wire Black 16 AWG - 1Mtr
CR292	CORE RC-3200mAhR 3.7V 30/60C 1S Lipo
CR653	Core RC Silicone Wire 13AWG- Black-1 Mtr
DA771003	DASH 12AWG Wire Black
DA771004	DASH 13AWG Wire Black
DA771005	DASH 14AWG Wire Black
FAN26187	Fantom 1S 7800mAh Lipo - 4mm
FAN26187-5	Fantom 1S 7800mAh Lipo - 5mm
IPCC1S6600HV4	Intellect Lipo LiHV 120C 1S 6600mAh 3.8V
IPCC1S8200HV4	Intellect Lipo LiHV 120C 1S 8200mAh 3.8V
LRP430268	Lipo 8000mAh - P4 1/12 Ultra LCG - 3.7V
LRP430270	Lipo 6200mAh - P4 1/12 Ultra LCG Stock Spec - 3.7V
MR33-SB2	MR33 Lipo Battery Safety Bag - V2

## General Accessories

CR005	CORE RC Battery Tape - Black 50m
CR043	CORE RC - Silver X-Weights 16pcs
CR058	CORE RC - Black X-Weights 16pcs
CR060	Small Body Clip 1/10 - Gloss Black (8)
CR061	Small Body Clip 1/10 - Silver (8)
CR062	Small Body Clip 1/10 - Gold (8)
CR063	Small Body Clip 1/10 - Fluorescent Yellow (8)
CR064	Small Body Clip 1/10 - Fluorescent Green (8)
CR065	Small Body Clip 1/10 - Fluorescent Red (8)
CR066	Small Body Clip 1/10 - Metallic Green (8)
CR067	Small Body Clip 1/10 - Metallic Red (8)
CR068	Small Body Clip 1/10 - Metallic Blue (8)
CR069	Small Body Clip 1/10 - Metallic Purple (8)
CR159	CORE RC Battery Tape - Orange 50m
CR197	CORE RC - Glass Setup Board
CR297	CORE RC - Neoprene Bag
CR518	Super Glue Nozzles - pk10
CR519	Under LiPo Weight 35g brass 1S/Shorty
CR522	CORE RC - 522 Pro Tyre Glue + 2 Nozzles
CR548	CORE RC - Tool Bag
CR549	CORE RC - Oil Bag
CR663	Slim Battery Tape - Black - 12mm x 25M
CR725	Double Sided Tape - Clear/Rubber - 25mm x 1m
CR726	Double Sided Tape - Grey/Foam - 25mm x 1m
DF4260269080410	Dry-Fluid Extreme RC Car - 20ml
DF4260269080731	Dry-Fluid Extreme Gear Lube - 10ml
G353	Schumacher Glass Setup Board
G354	Schumacher - Neoprene Bag
J003	Contact RC - Glass Setup Board
J005	Contact LMP12 Rear Wheel Centre Finder pr
SXT00080	SXT Ice Tyre Glue
SXT00085	SXT Silk Anti Wear Grease
U4831	Aerial Tube Cap - Black - 6pk

## Tools

CR044	CORE RC - Curved Body Scissors
CR045	CORE RC - Straight Body Scissors
CR103	Magnetic Parts Tray - Black
CR148	CORE RC - Polybutler Pit Box; Black
CR248	Hobby Bench Vice
CR271	4 Way Wrench Small - 4.0,4.5,5.5,7.0mm
J005	Contact LMP12 Rear Wheel Centre Finder pr
U2789	Schumacher Hex Driver - 1.5mm
U2790	Schumacher Hex Driver - 2.0mm
U2791	Schumacher Hex Driver - 2.5mm
U2792	Schumacher Hex Driver - 3.0mm
U2795	Schumacher M3 Nut Driver
U2818	Schumacher Body Reamer
U4229	Steel Spanner - 5.5mm/3.9mm

## 1/12 Foam Tyres - LMP12 - Circuit

JT2-28RA	1/12 Rear Soft Pink 28Sh A Foam - 46mm
JT2-30FA	1/12 Front Pink 30Sh A Foam - 44mm
JT2-30FJ	GT12-1/12 Front Pink 30Sh J Foam - 44mm
JT2-30RA	1/12 Rear Pink 30Sh A Foam - 46mm
JT2-30RJ	1/12 Rear Pink 30Sh J Foam - 46mm
JT2-30RT	1/12 Rear 30Sh T Foam - 46mm
JT2-32FA	1/12 Front Magenta 32Sh A Foam - 44mm
JT2-32FJ	GT12-1/12 Front Magenta 32Sh J Foam
JT2-32RA	1/12 Rear Magenta 32Sh A Foam - 46mm
JT2-32RJ	1/12 Rear Magenta 32Sh J Foam
JT2-35FA	1/12 Front Double Pink 35Sh A Foam - 44mm
JT2-35FJ	GT12-1/12 Front Double Pink 35Sh J Foam
JT2-35FT	GT12-1/12 Front T Foam 35Sh - 44mm
JT2-35RT	1/12 Rear 35Sh T Foam - 46mm
JT2-40FT	GT12-1/12 Front T Foam 40Sh - 44mm
JTCF	1/12 Front 32Sh Control Tyre 44mm
JTCR	1/12 Rear 30Sh Control Tyre 46mm
U4828	Tyre Truer Rear Wheel Insert - Atom

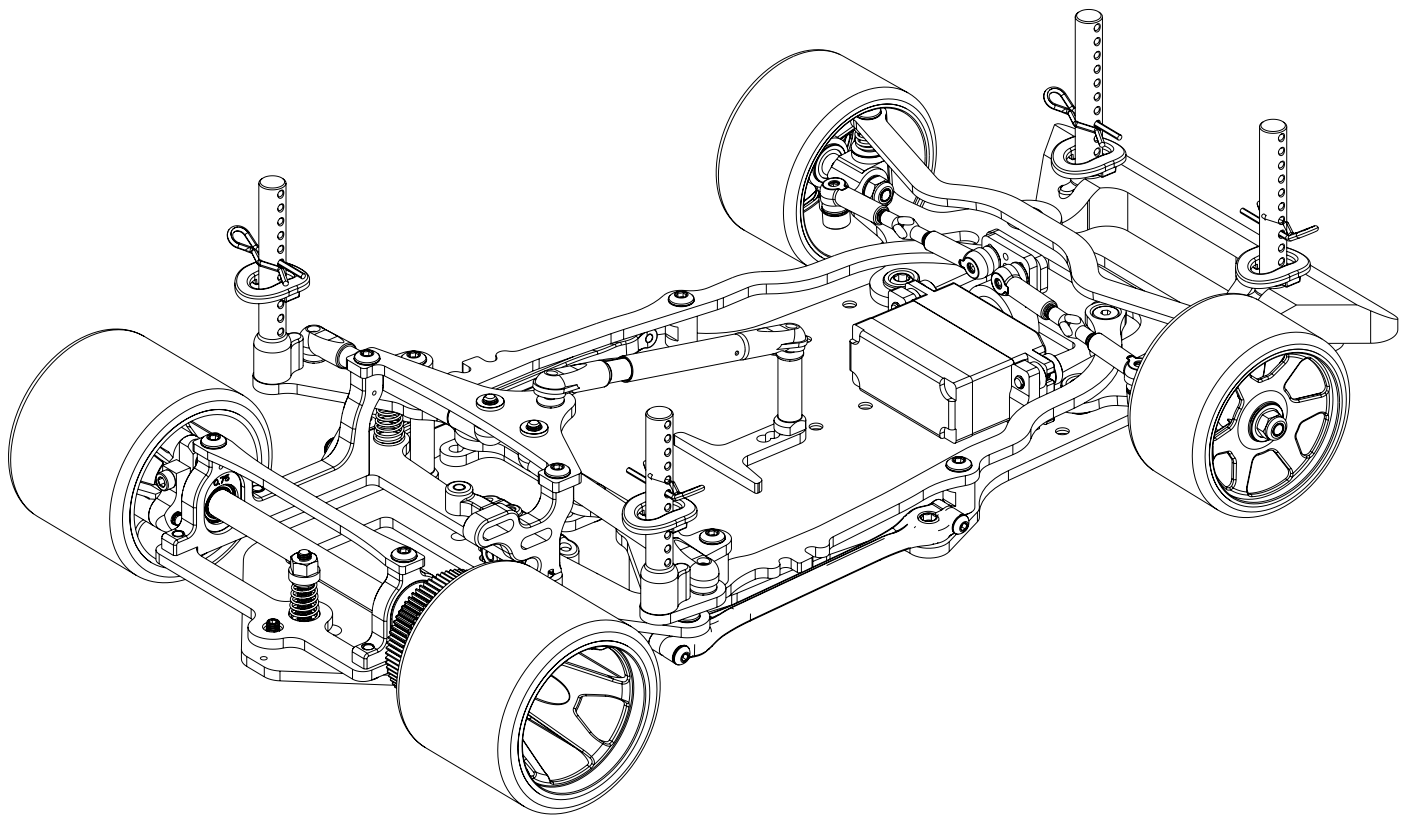
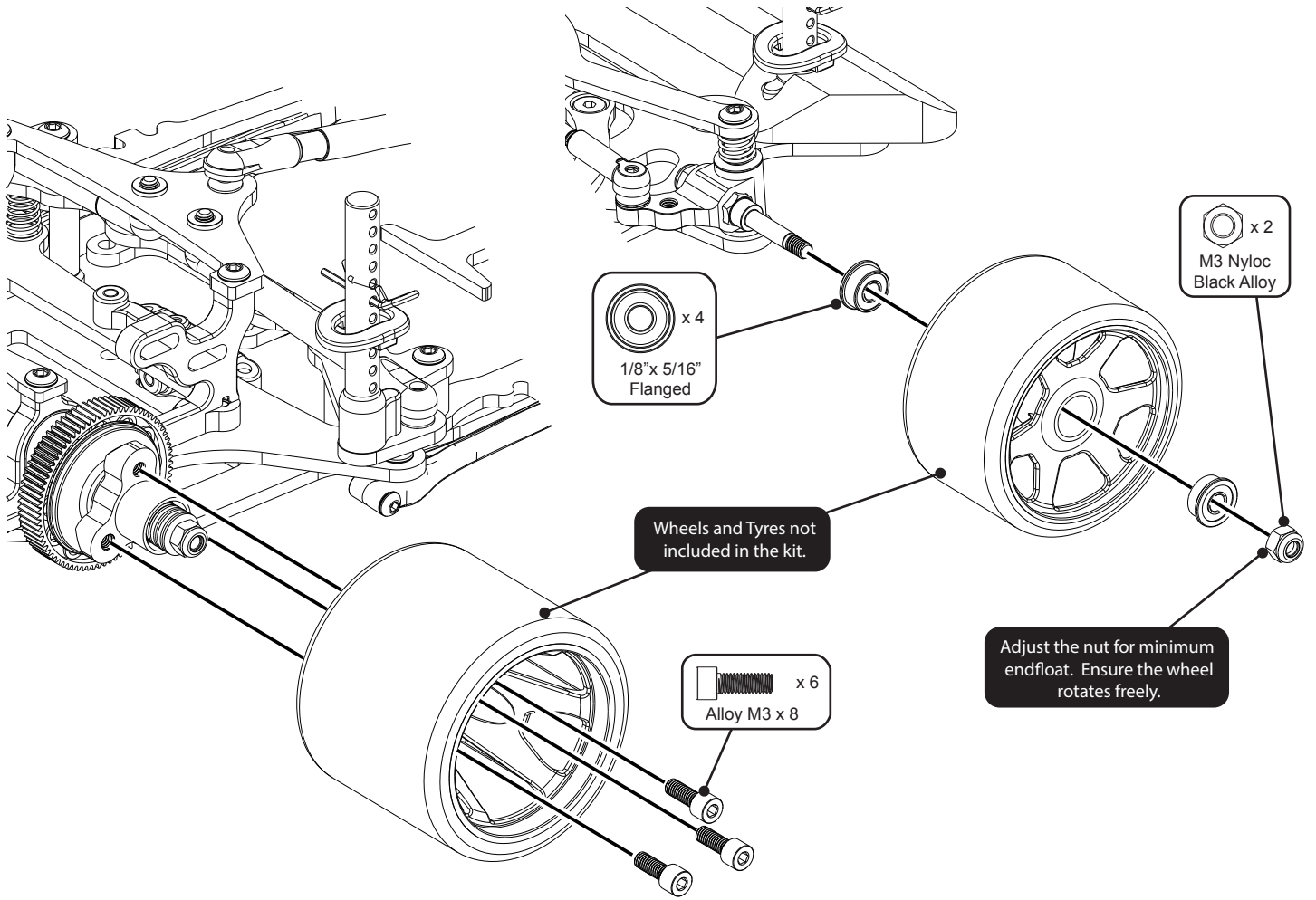
## Paint

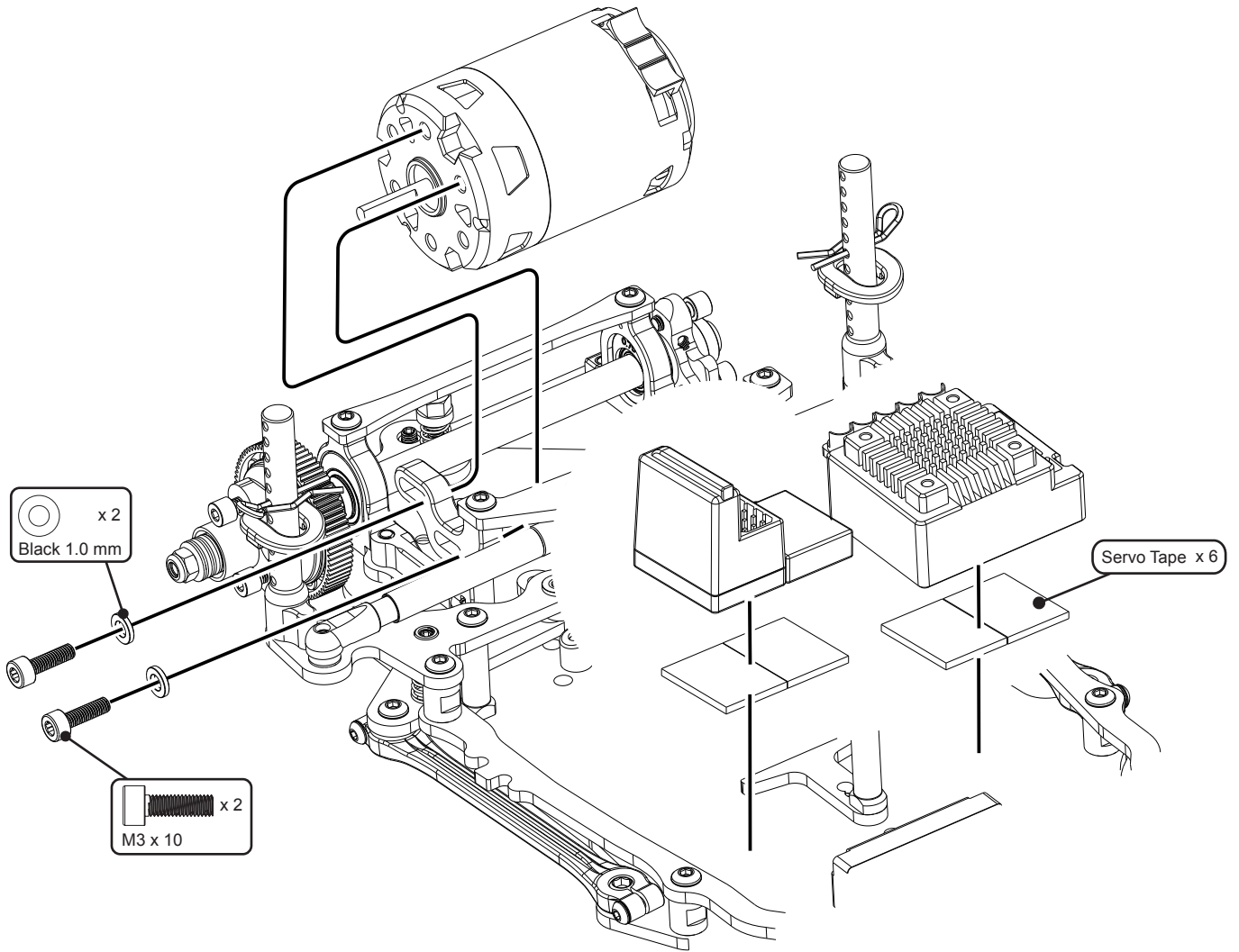
CR599	Spraygun Pro for Core paint
CR600	Aerosol Paint - White Knight
CR601	Aerosol Paint - Yellow Taxi
CR602	Aerosol Paint - Fire Red
CR603	Aerosol Paint - French Blue
CR604	Aerosol Paint - Petrol Blue
CR605	Aerosol Paint - Racing Green
CR606	Aerosol Paint - Jet Black
CR607	Aerosol Paint - Lime Green
CR608	Aerosol Paint - Tangerine
CR609	Aerosol Paint - Hot Pink
CR610	Aerosol Paint - Berry Purple
CR611	Aerosol Paint - Neon Yellow
CR612	Aerosol Paint - Neon Orange
CR613	Aerosol Paint - Neon Red
CR614	Aerosol Paint - Neon Green
CR615	Aerosol Paint - Neon Fire
CR616	Aerosol Paint - Neon Carrot
CR617	Aerosol Paint - Neon Pink
CR618	Aerosol Paint - Neon Blue
CR619	Aerosol Paint - Metallic Blue
CR620	Aerosol Paint - Metallic Graphite
CR621	Aerosol Paint - Metallic Silver
CR622	Aerosol Paint - Metallic Purple
CR623	Aerosol Paint - Metallic Green
CR624	Aerosol Paint - Metallic Red
CR625	Aerosol Paint - Metallic White
CR626	Aerosol Paint - Clear Sparkle
CR627	Aerosol Paint - True Chrome
CR628	Aerosol Paint - Clear Backing
CR629	Aerosol Paint - Window Tint
CR631	Aerosol Paint - Spearmint
CR666	Aerosol Paint - Flat Matt Finish
CR667	Aerosol Paint - Glacier Sapphire
CR668	Aerosol Paint - Glacier Raspberry
CR669	Aerosol Paint - Glacier Gold
CR670	Aerosol Paint - Glacier Plum
CR671	Aerosol Paint - Shark Grey
CR672	Aerosol Paint - Bullion Gold
HN20000	Airbrush Bottle Adapter for 60ml/120ml
HN20010	Airbrush Paint Clear Coat - 60ml
HN20020	Airbrush Paint SP Reducer/Cleaner 60ml
HN20021	Airbrush Paint SP Reducer/Cleaner 120ml
HN21000	Airbrush Paint Chrome 60ml
HN22000	Airbrush Paint Solid White 60ml
HN22001	Airbrush Paint Solid White 120ml
HN22020	Airbrush Paint Solid Grey 60ml
HN22030	Airbrush Paint Solid Black 60ml
HN22031	Airbrush Paint Solid Black 120ml
HN22040	Airbrush Paint Solid Yellow 60ml

## Paint Cont....

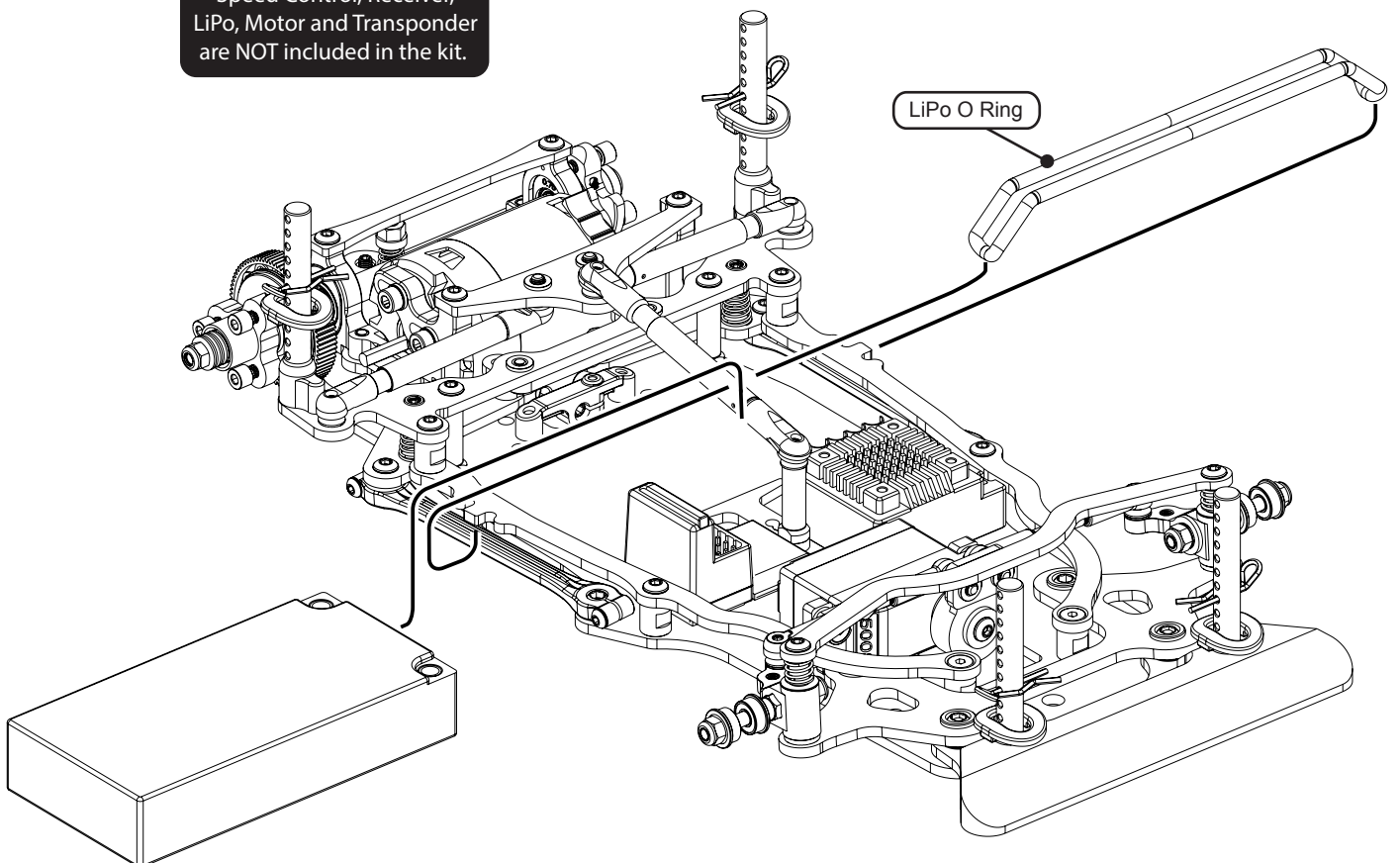
HN22050	Airbrush Paint Solid Orange 60ml
HN22060	Airbrush Paint Solid Red 60ml
HN22080	Airbrush Paint Solid Aqua Blue 60ml
HN22090	Airbrush Paint Solid Sky Blue 60ml
HN22100	Airbrush Paint Solid Blue 60ml
HN22110	Airbrush Paint Solid Green 60ml
HN22130	Airbrush Paint Solid Brown 60ml
HN23000	Airbrush Paint Transparent Yellow 60ml
HN23010	Airbrush Paint Transparent Orange 60ml
HN23020	Airbrush Paint Transparent Pink 60ml
HN23030	Airbrush Paint Transparent Red 60ml
HN23040	Airbrush Paint Transparent Purple 60ml
HN23050	Airbrush Paint Transparent Blue 60ml
HN23060	Airbrush Paint Transparent Green 60ml
HN23070	Airbrush Paint Transparent Grey Tint 60ml
HN24000	Airbrush Paint Pearl White 60ml
HN24010	Airbrush Paint Pearl Silver 60ml
HN24020	Airbrush Paint Pearl Gold 60ml
HN24030	Airbrush Paint Pearl Orange 60ml
HN24050	Airbrush Paint Pearl Red 60ml
HN24060	Airbrush Paint Pearl Copper 60ml
HN24070	Airbrush Paint Pearl Blue 60ml
HN24080	Airbrush Paint Pearl Key-Lime Green 60ml
HN24090	Airbrush Paint Pearl Green 60ml
HN24100	Airbrush Paint Pearl Charcoal Grey 60ml
HN24110	Airbrush Paint Pearl Black 60ml
HN25000	Airbrush Paint Neon Yellow 60ml
HN25010	Airbrush Paint Neon Flame Orange 60ml
HN25020	Airbrush Paint Neon Orange 60ml
HN25030	Airbrush Paint Neon Pink 60ml
HN25040	Airbrush Paint Neon Raspberry 60ml
HN25050	Airbrush Paint Neon Red 60ml
HN25060	Airbrush Paint Neon Purple 60ml
HN25070	Airbrush Paint Neon Blue 60ml
HN25080	Airbrush Paint Neon Green 60ml
HN26000	Airbrush Paint Iridescent Yellow 60ml
HN26010	Airbrush Paint Iridescent Candy Red 60ml
HN26020	Airbrush Paint Iridescent Red 60ml
HN26030	Airbrush Paint Iridescent Purple 60ml
HN26050	Airbrush Paint Iridescent Teal Green 60ml
HN26060	Airbrush Paint Iridescent Turquoise 60ml
HN27000	Airbrush Paint Change Gold 60ml
HN27010	Airbrush Paint Change Red 60ml
HN27020	Airbrush Paint Change Purple 60ml
HN27030	Airbrush Paint Change Blue 60ml
HN27040	Airbrush Paint Change Green 60ml

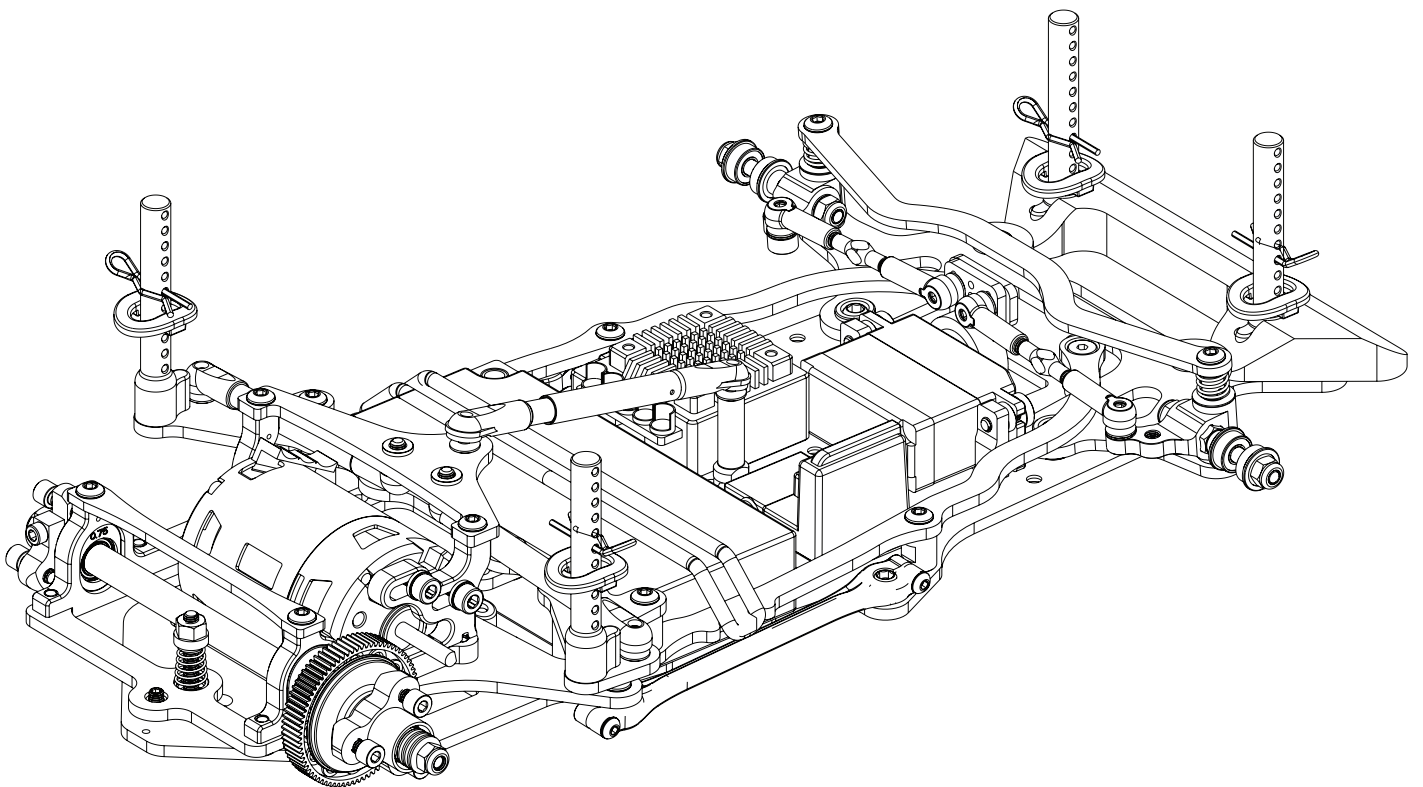
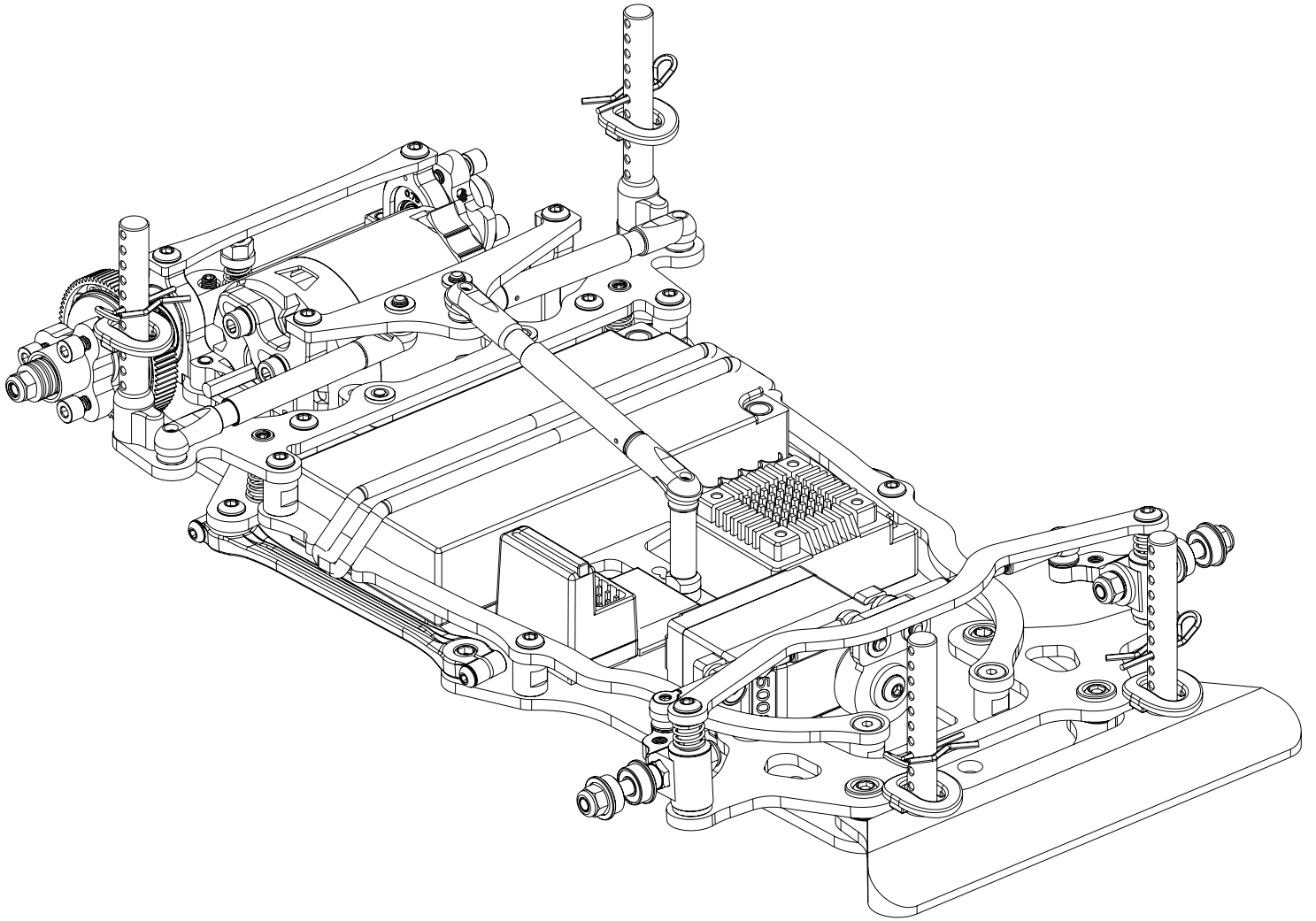






Speed Control, Receiver,  
LiPo, Motor and Transponder  
are NOT included in the kit.

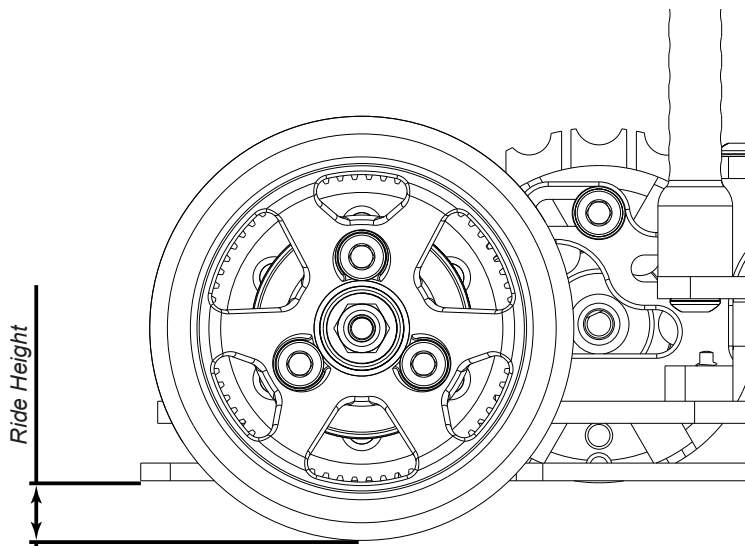




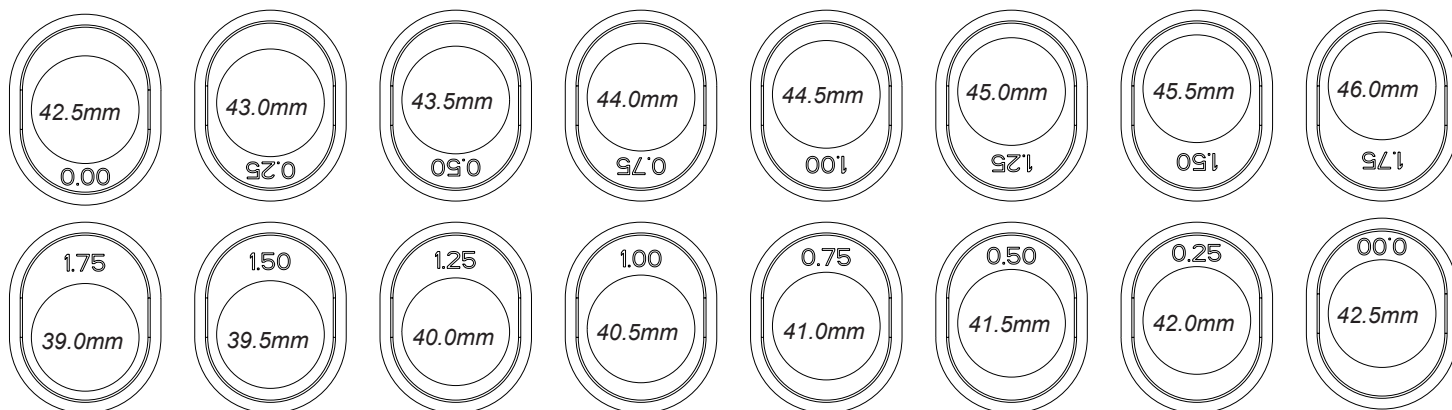
Ride Height

*In general always run the car as low as possible, without the chassis grounding out.*

*A good starting point with foam tyres is 3.5mm.*



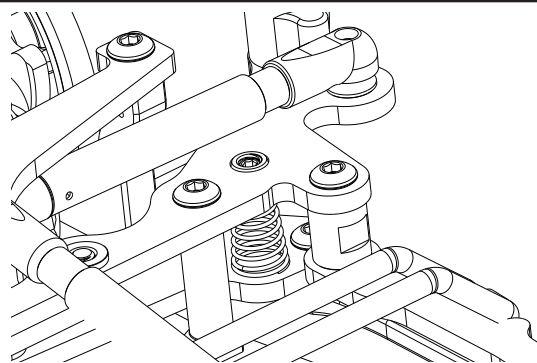
*Using these Eccentrics for the foam diameter stated will give the kit rear ride height setting of approximately 3.5mm.*



Roll Springs

*Roll springs are used to control the cars steering balance. A softer spring will give an easier to drive car. Stiffer roll springs can be used to give a more aggressive steering car. The standard setting has the roll springs uncompressed and both just touching the lower pod plate when the car is stationary. Screwing them downward and compressing the springs creates more steering while loosening them gives an easier to drive car.*

*Adjusting the springs allows the tweak to be infinitely adjusted. Ensure they are not set too unevenly. If more than 0.5mm different, further investigation is required.*

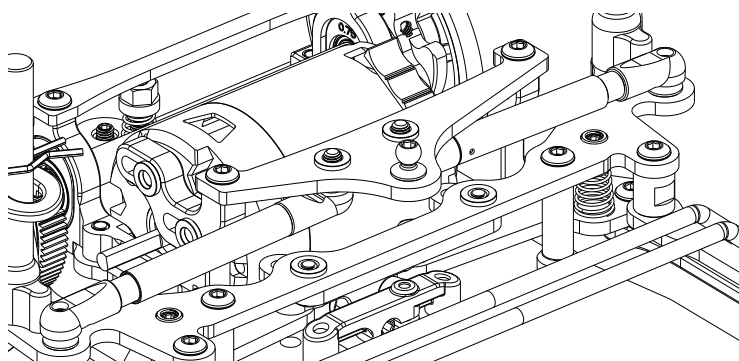


Rear Roll Damping

*Generally in high traction track conditions, thinner roll damping oil is better. Low traction tracks may require thicker damping.*

*Thicker roll damping oil slows the weight transfer of the rear and makes the car easier to drive. Thicker oil can help if the track surface is bumpy and there are issues with bumps in the middle of the corner.*

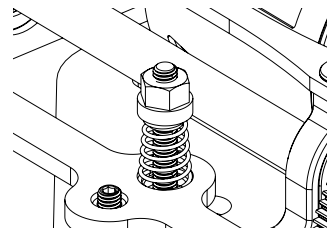
*A good range is between 7,000cSt and 20,000cSt*



## Rear Bump Spring

This spring is used to set the pod angle. Adjust the spring tension so that the pod is horizontal when the car is on a flat surface. This gives the kit setting with zero anti-squat or pro-squat.

A harder bump spring can give more initial steering. A softer bump spring will give more aggressive mid corner steering and improve the cars bump handling ability.

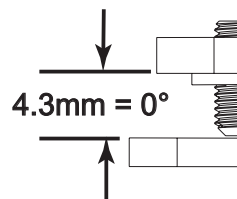


## Anti-squat

If the bump spring is screwed down further, the pod will no longer be horizontal. Angled down at the rear is Anti-squat. If the spring is unscrewed from horizontal, the pod will be angled forwards. This is Pro-squat.

Anti-squat resists the weight transfer to the rear under power. This will increase on power steering. Typically anti-squat may be used but pro-squat is rarely useful. Setting Anti-Squat can be done by setting this dimension using digital calipers.

4.3mm = 0° Anti-squat. A smaller dimension = More Anti-Squat.

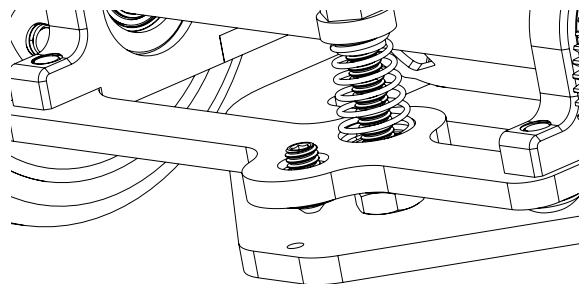


## Rear Droop

Rear droop adjusts the balance of the cars handling. Less droop makes the car more aggressive, squaring up the turns. More droop gives less corner rotation but an easier to drive car. More droop also improves the cars bump handling.

Start with 1mm of droop.

To set this, start with the droop screw backed out and screw in to reduce droop. Measure this by measuring the cars rear ride height, then take all the weight off the car by lifting from the rear of the centre damper tube (the wheels must still just be touching the floor). Measure the chassis from the floor in this position and subtract the ride height to calculate the droop.

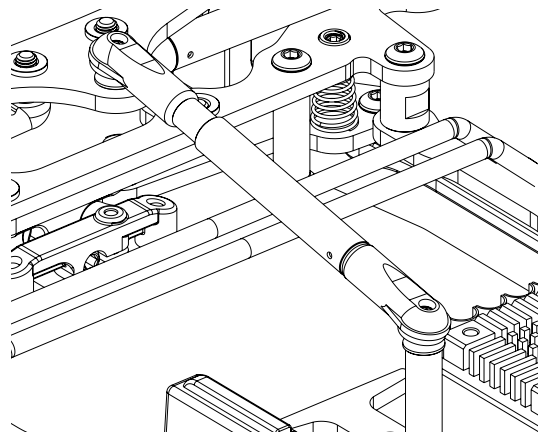


## Rear Centre Damping

Generally in high traction track conditions, thinner bump damping oil is better. Low traction tracks may require thicker damping.

Thicker bump damping oil slows the weight transfer of the rear and makes the car easier to drive when coming off power. Thicker oil can help if the track surface is bumpy and there are issues with bumps when the car is moving in a straight line.

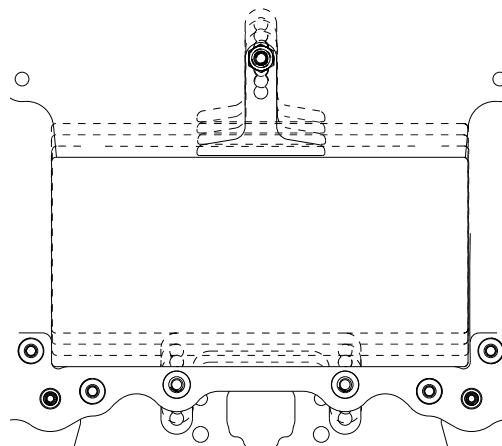
A good range is between 15,000cSt and 50,000cSt



## LiPo Position

The Eclipse 3 has four LiPo positions. A more forward LiPo will make the car easier to drive. A more rearward LiPo will make the car more aggressive and provide more steering.

The side LiPo stops allow for fine tuning battery clearance by loosening the screws and gently pushing them inward.



### Roll Centre Adjustment (Speed Secret )

When using the alloy speed secret pivot parts (U7918 and U7919) the roll centre can be adjusted by adding or removing spacers from below the alloy pivot mount and alloy pivot block.

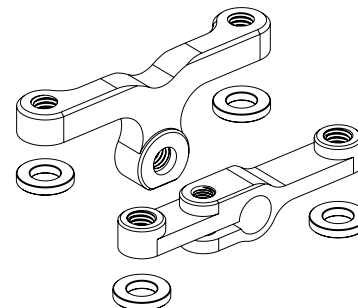
Lowering the roll centre (removing spacers) will give the car more grip and increase chassis roll.

Raising the roll centre (adding spacers) will increase steering by making the car rotate more from the rear.

The alloy pivot mount and block need a 1mm spacer in order to maintain kit roll centre.

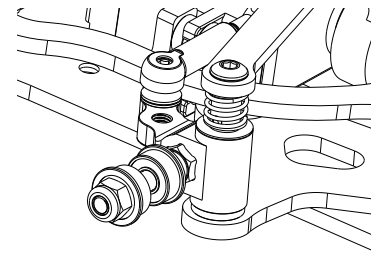
**MUST** have equal spacers beneath both parts.

Racers Tip: Using U7897 1mm Alloy Pivot Spacer can make this adjustment much easier. Please note: These must both be inserted from the front side.



### Front Springs

Softer springs will ride the bumps better and generally allow the car to roll more which can increase steering, especially in the middle of the corner. Harder springs make the car more responsive and are more suitable for high grip tracks. They will generally increase initial steering but improve mid corner stability.



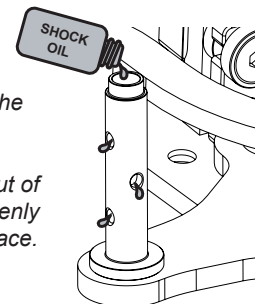
### Front Damping

Front damping can be used to tune the car depending on the track traction levels. Like rear damping, in high traction track conditions, thinner oil is required, compared to low traction track conditions, where thicker oil can improve the cars driveability.

Thicker oil on the kingpin generally always gives a less responsive, easier to drive car. Too thick oil on the kingpin may lead to a 'lazy' feeling car which lacks corner speed.

We suggest a wide range of possibilities here starting from 12,000cSt - 40,000cSt

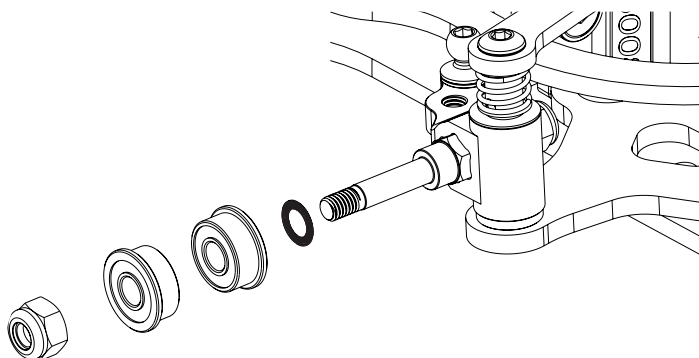
Oil can be filled inside the kingpins to give a long lasting damping effect. After some oil squirts out of all the holes, spread evenly around the kingpin surface.



### Front Track Width

Wider front track width will make the car easier to drive, provide less steering and give a slower response. Narrower front track width will make the car harder to drive, provide more steering and give a faster response.

Optional front track width adjustment shims: U4862

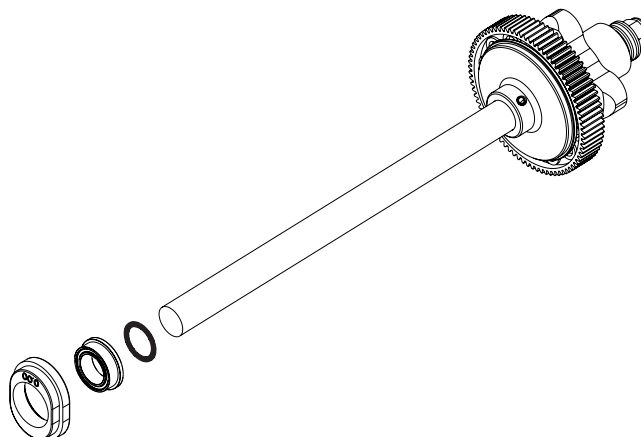


### Rear Track Width

Wider rear track width provides increased rear grip and an easier to drive car. Narrower rear track width increases corner speed and steering making the car harder to drive.

Kit rear width has a 0.5mm spacer on one side and 3mm of spacers on the other side. Remove or add spacers to suit (equally both sides).

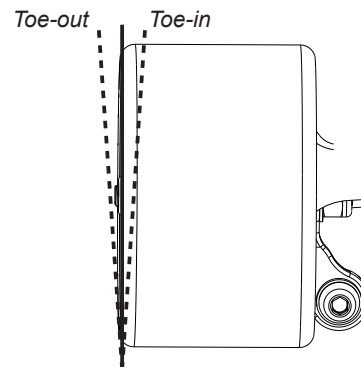
Optional rear track width adjustment shims: U4971



Front Toe

Parallel front wheels or a slight Toe-out (up to 1 degree per side) is our suggested setting range.

Toe-out gives more initial steering. It does however make the car more difficult to drive on the straight, due to increased responsiveness.

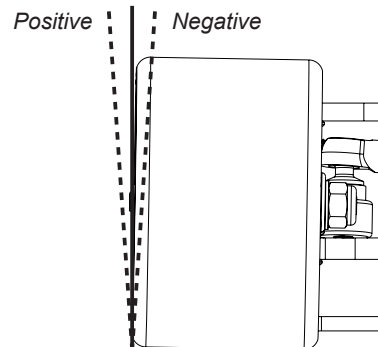


Camber

Increasing the negative camber angle will increase the cars steering. This will make the car more difficult to drive but often faster on a lap.

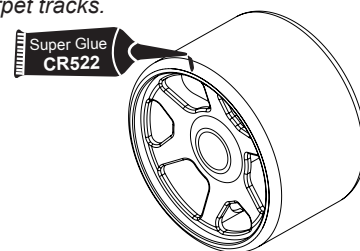
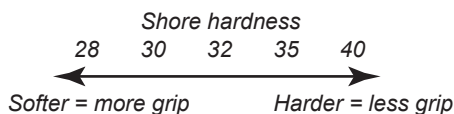
Reducing the negative camber angle is a good setting change if traction roll is a problem.

As a general rule, setting the camber so that the tyres wear without any coning will give the most ideal setting in usual conditions.



Tyres

The most important factor in racing is to get the tyres right. Contact foam tyres are designed for use on carpet tracks.



Use softer front tyres if you want more steering, and harder front tyres if you want less steering. In high traction conditions sometimes you can have too much overall grip. Using harder tyres all round should make you faster through the corners with less traction rolling in these conditions. If the track grip is not high enough, or the tyres are too hard, the car may slide and stop in the corners, if this is the case, reduce the shore rating until the track conditions change.

RACERS TIP

43mm Rear, 41.5mm Front is a good all round tyre size, reducing this size is only an advantage in extreme conditions to prevent grip roll. If you have too much steering then add a thin layer of superglue (CR522 or MR-Superglue) to the outside edge of the front tyre to reduce the front tyre grip. This can be used to prevent grip roll in extreme conditions.

Gear Ratio

First work out the gear ratio from the spur gear and pinion (For example 76/40 = 1.9).

Then complete the following equation.

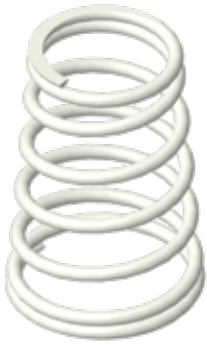
$$\frac{43 \text{ (tyre dia)} \times \pi \text{ (3.142)}}{1.9 \text{ (gear ratio)}} = 71.1\text{mm/rev}$$

In this chart we have given the mm/rev figures for our suggested tyre size 43mm, for a range of spurs and pinions.

64DP GEARS

	19	20	21	22	23	24	25	26	27	28	29	30	31	32	33	34	35	36	37	38	39	40	41	42	43	44	45	46	47	48	49	50	51	52	53	54		
72																	65.68	67.55	69.43	71.31	73.18	75.06	76.94	78.81	80.69	82.56	84.44	86.32	88.19	90.07	91.95	93.82	95.70	97.58	99.45	101.33		
76													55.11	56.89	58.66	60.44	62.22	64.00	65.78	67.55	69.33	71.11	72.89	74.66	76.44	78.22	80.00	81.77	83.55	85.33	87.11	88.89	90.66	92.44	94.22	96.00		
78											50.23	51.96	53.70	55.43	57.16	58.89	60.62	62.36	64.09	65.82	67.55	69.29	71.02	72.75	74.48	76.21	77.95	79.68	81.41	83.14	84.87	86.61	88.34	90.07	91.80	93.53		
88	29.17	30.71	32.24	33.78	35.31	36.85	38.38	39.92	41.45	42.99	44.52	46.06	47.59	49.13	50.66	52.20	53.74	55.27	56.81	58.34	59.88	61.41	62.95	64.48	66.02	67.55	69.09	70.62										
94	27.31	28.75	30.18	31.62	33.06	34.50	35.93	37.37	38.81	40.24	41.68	43.12	44.56	45.99	47.43	48.87	50.31	51.74	53.18	54.62	56.05	57.49																

Minimum Combined Tooth Sum 107T - Maximum Combined Tooth Sum 134T (64DP)



CR280 - Ti Pro Ball Studs - Short - (pr)



U7936 - Titanium King Pin - Eclipse 3 (pr)



J005 - Contact LMP12 Bodyshell Rear Wheel Centre Finder



U7825 - Titanium Pivot Ball 5.5mm Low (pr)



- U4838 - Rear Springs Black - Soft - At/Ecl - Kit - (pr)
- U4839 - Rear Springs Silver - Med/Soft - At/Ecl - (pr)
- U4840 - Rear Springs Gold - Med/Hard - At/Ecl - (pr)
- U4841 - Rear Springs Nickel - Hard - At/Ecl - (pr)
- U4842 - Front Spring Black - Soft - Atom - (pr)
- U4843 - Front Spring Silver - Medium - Atom - (pr)
- U4844 - Front Spring Gold - Hard - At/Ecl - (pr)
- U4845 - Front Spring Tuning Set - At/Ecl
- U4846 - Rear Spring Tuning Set - At/Ecl
- U7322 - Rear Spring Red Dot - Hard/Ultra - At/Ecl - Kit - (pr)
- U7323 - Rear Spring Black - Ultra - At/Ecl - (pr)
- U7489 - Front Spring White - Ultra - At/Ecl - Kit - (pr)



CR664 - Alloy Motor Spacer - 1mm - pk2

- CR310 - Alloy Csk Hex Screws M3 x 6 pk10
- CR311 - Alloy Csk Hex Screws M3 x 8 pk10
- CR312 - Alloy Csk Hex Screws M3 x 10 pk10
- CR314 - Alloy Button Head Hex Screws M3 x 6 pk10
- CR315 - Alloy Button Head Hex Screws M3 x 8 pk10
- CR316 - Alloy Button Head Hex Screws M3 x 10 pk10
- CR320 - Titanium Csk Hex Screws M3 x 6 pk10
- CR321 - Titanium Csk Hex Screws M3 x 8 pk10
- CR322 - Titanium Csk Hex Screws M3 x 10 pk10
- CR327 - Titanium Button Hex Screws M3 x 6 pk10
- CR328 - Titanium Button Hex Screws M3 x 8 pk10
- CR329 - Titanium Button Hex Screws M3 x 10 pk10



U7937 - Titanium Front Axle - Eclipse 3 (pr)



U7828 - Titanium Ball Stud Low (Ultra Short) (pk4)  
U7829 - Titanium Ball Stud Low (Short) (pk4)



- CR509 - Kimbrough - Thin Pro/Gear 88T - 64DP #709
- CR513 - Kimbrough - Spur Gear 78T - 64DP #202
- CR515 - Kimbrough - Spur Gear 76T - 64DP - #199 - Kit
- CRW64072 - Diff Spur 64DP 72T - For Diff or Spur Adapters



U7943 - Alloy Spacer Clip 0.5mm (pk4)  
U7944 - Alloy Spacer Clip 0.75mm (pk4)



U7919 - Alloy Pivot Block - Atom 2



U7897 - Alloy Pivot Spacer 1mm - Atom 2 (pr)



CR721 - 1/12 Carbon Spool Axle + Clamp



U7918 - Alloy Pivot Mount - Atom 2



U3582 - Precision Balance Pivot Set



U7935 - C/F Camber Strap 1.5 Deg - Eclipse 3



- U4811 - 1/8 Silicone Nitride Ball (pk12)
- U4812 - Ceramic Bearing 1/8x5/16x9/64 Flanged (pr)
- U4979 - Ceramic Bearing 1/4 x 3/8 x 1/8 Flanged (pr)
- U7690 - Pro Ball Bearings 1/4 x 3/8 x 1/8 FI Sheilded
- U7691 - Pro Ball Bearings 1/8 x 5/16 x 9/64 FI Sheilded



- CR722 - Threaded Steel 5g Weight 13.50mm (pk4)
- CR723 - Threaded Steel 10g Weight 17.60mm (pk4)



U7453 - 30/40mm Fan Mount Kit - ATOM